



EVERARD READ

LONDON

**PENELOPE STUTTERHEIME**

*Merging*





**PENELOPE STUTTERHEIME**

*Merging*

5 – 27 May 2017





## PENELOPE STUTTERHEIME

### *Merging*

Depicting 'inner landscapes' has always been Stutterheime's preoccupation. Drawing inspiration from dreams and the unconscious, her layered and textured paintings deploy intensely vibrant colour to create mesmerising abstract works.

Making use of the impasto application of oil paint, Stutterheime presents tactile images that are symbolic and multi-layered. With a fluid subject matter that has evolved through landscape, portraiture and still life, to an abstract and esoteric form, these paintings serve as metaphors for the transformative processes that unfold in the body and psyche.

Stutterheime responds intuitively to her surroundings and seeks to convey interior landscapes rather than any particular reality. Referring to the experiential quality in the paintings, the intention is to lead both the artist and viewer to the possibility of moving through different states of consciousness.

'The texture and essence of my work comes from layering – layers of paint and layers of consciousness. This is a critical part of my process of distillation and getting closer to the nature of what a particular work is going to be', says Stutterheime. 'The painting voices my process – a dialogue of application and response; a play of intention and being willed by the brush.'

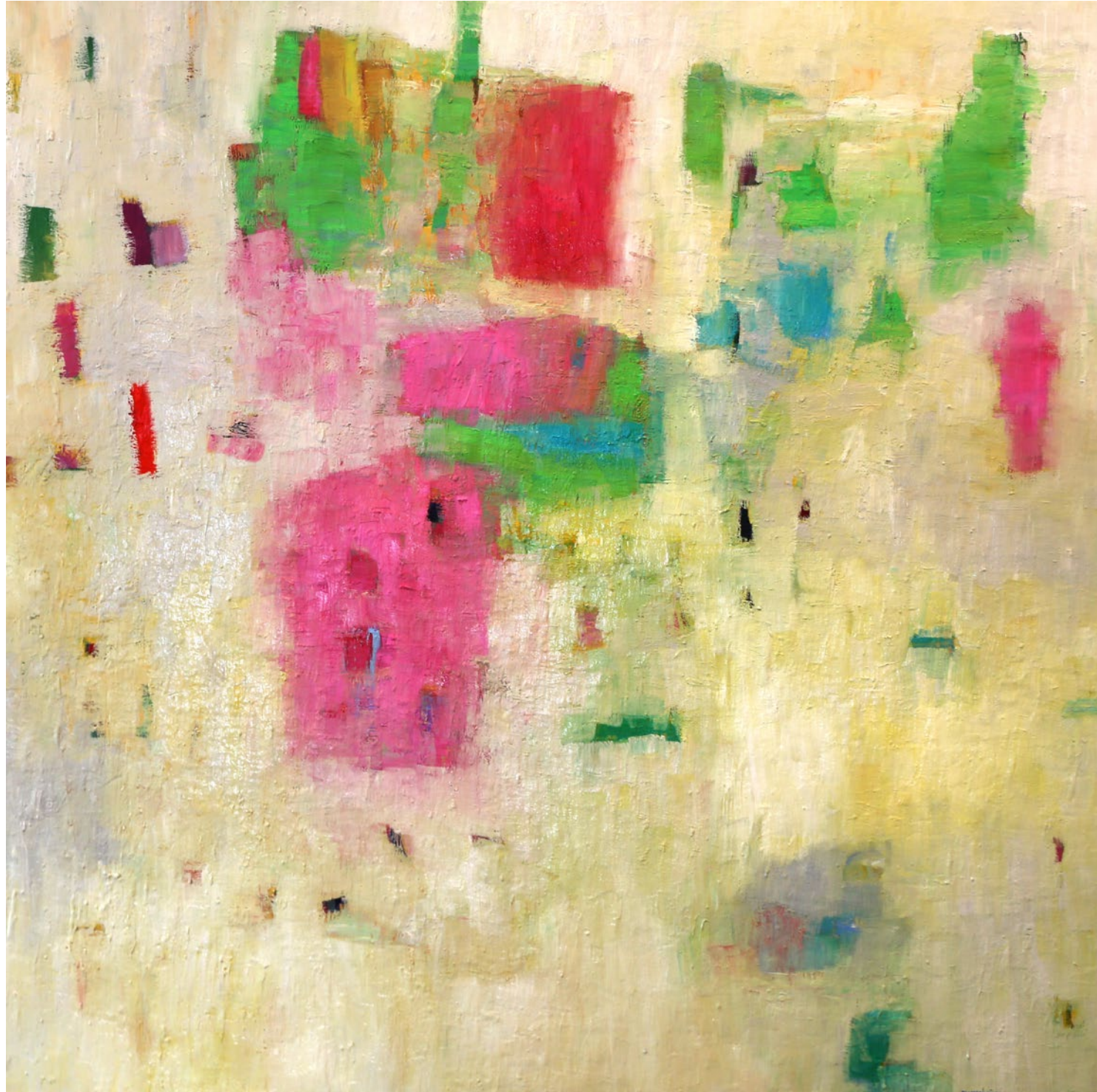
COVER (DETAIL)  
*Merging XIII*  
oil on linen  
120 x 120 cm

TITLE PAGE (DETAIL)  
*Merging VI*  
oil on linen  
80.5 x 165.5 cm



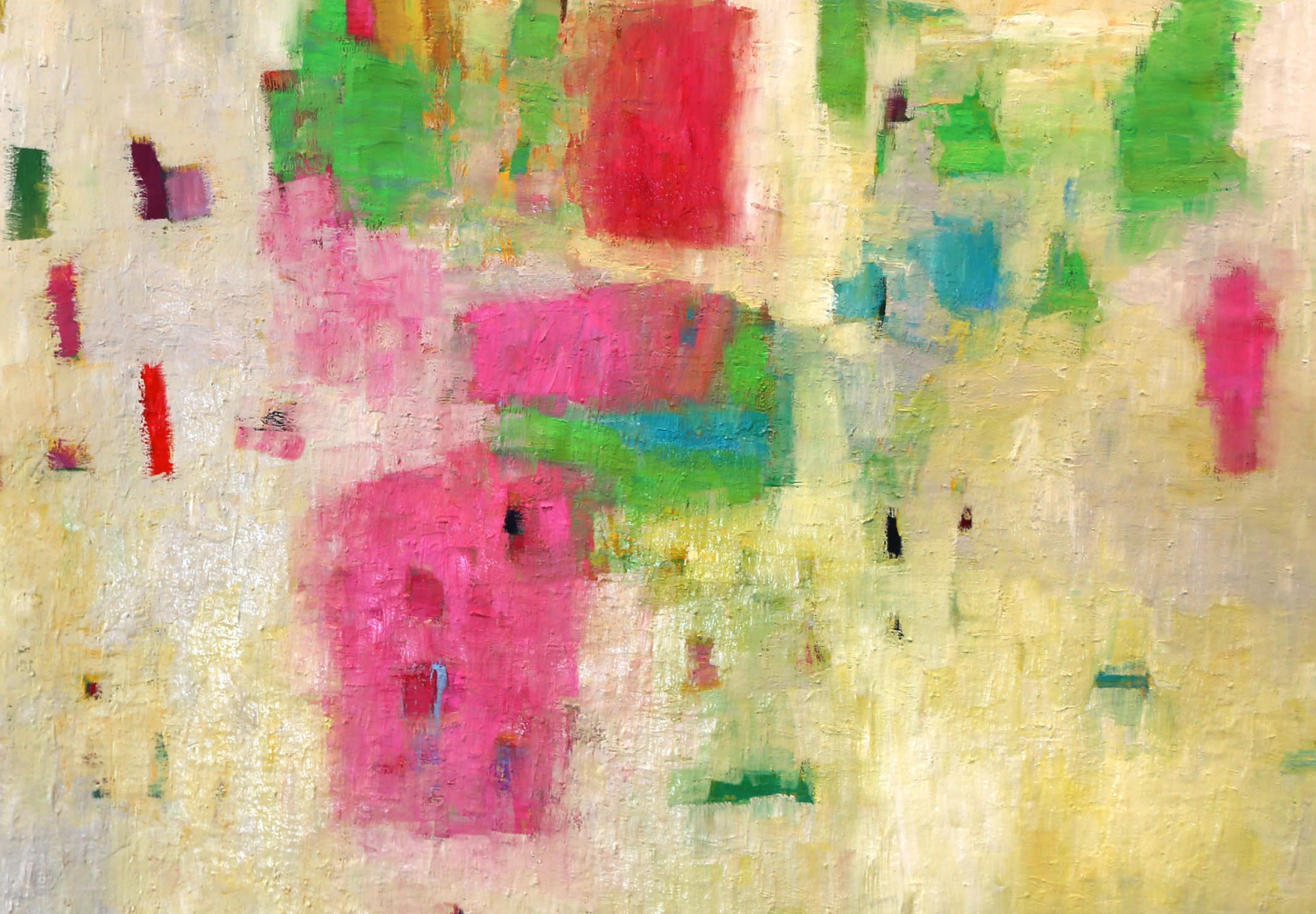






ABOVE & PAGES 8-9 (DETAIL)  
*Refuge V*  
oil on canvas  
110 x 110 cm









*Merging V*  
oil on linen  
80.5 x 165.5 cm



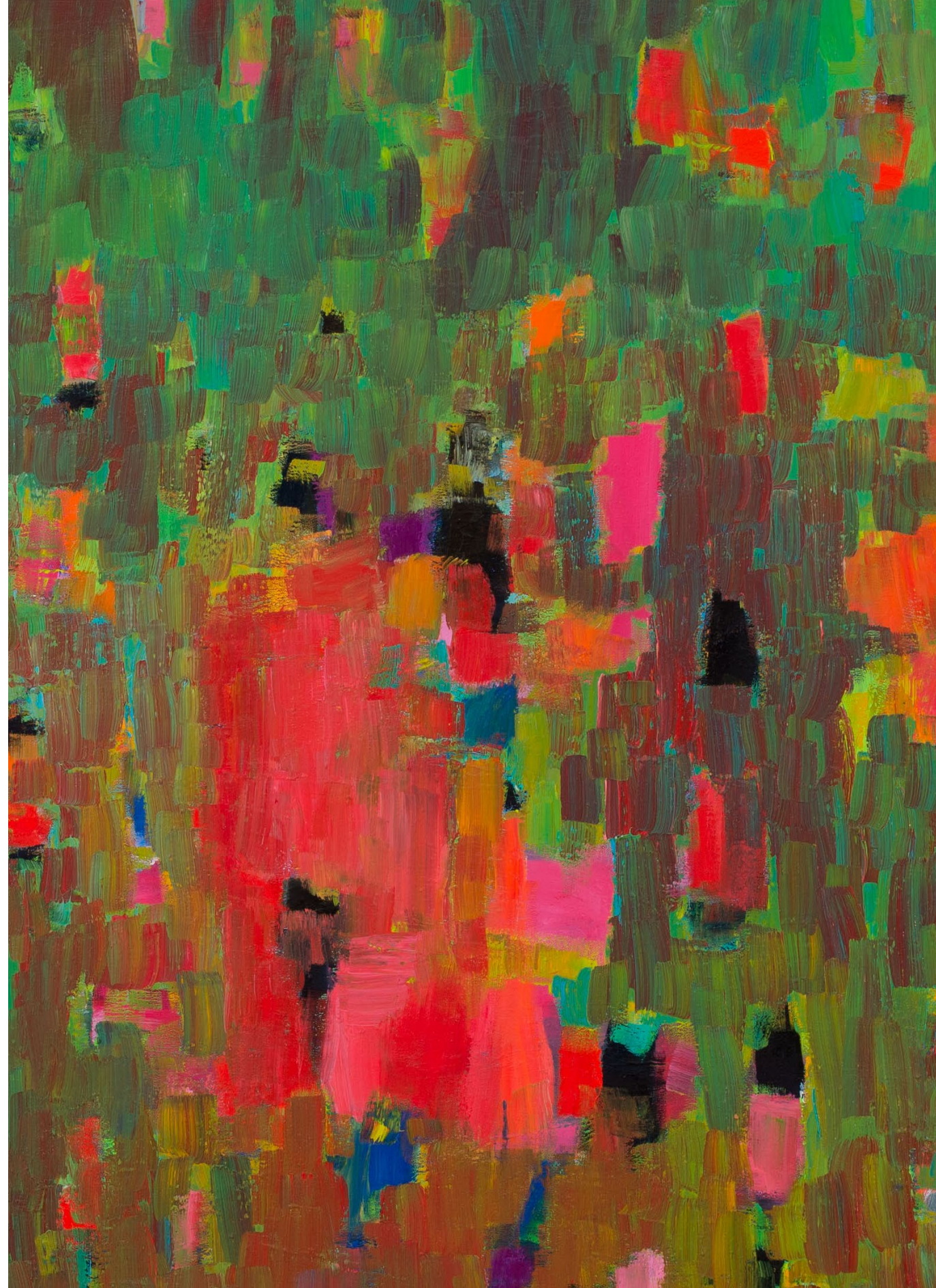


*Merging VI*  
oil on linen  
80.5 x 165.5 cm

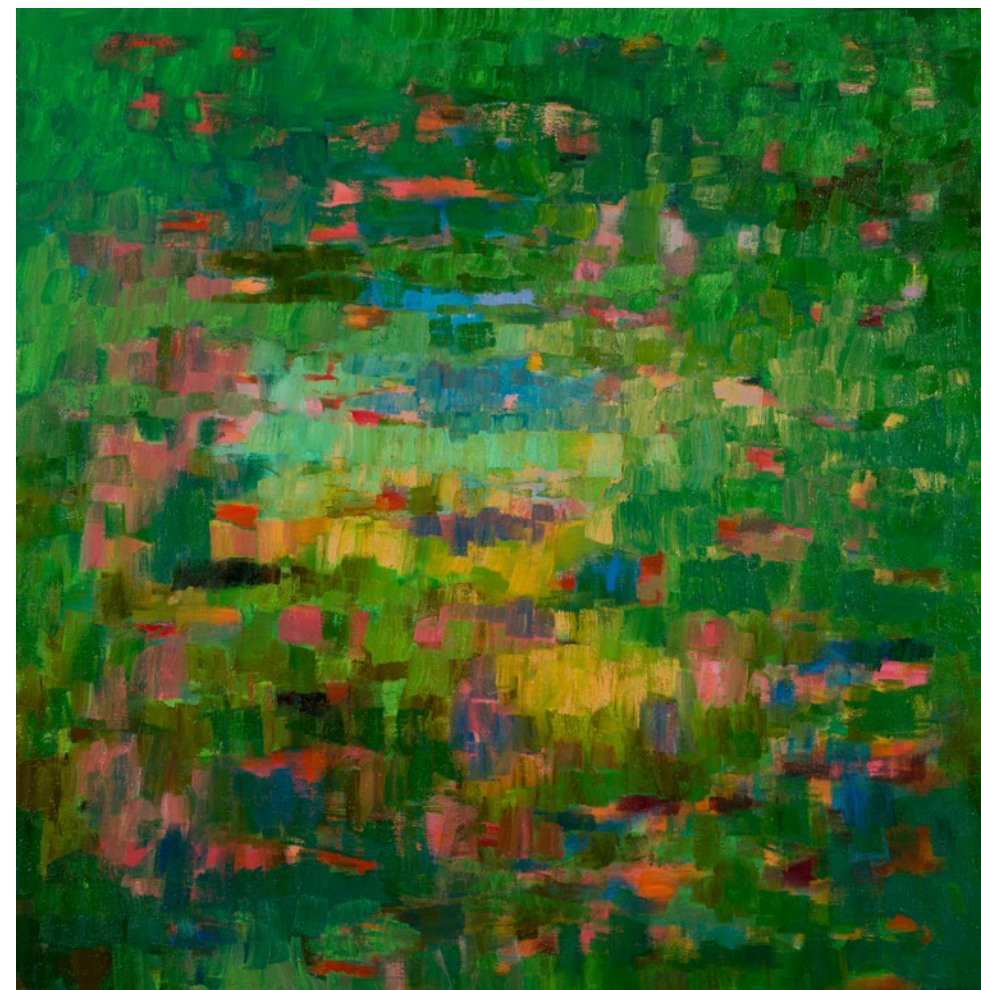
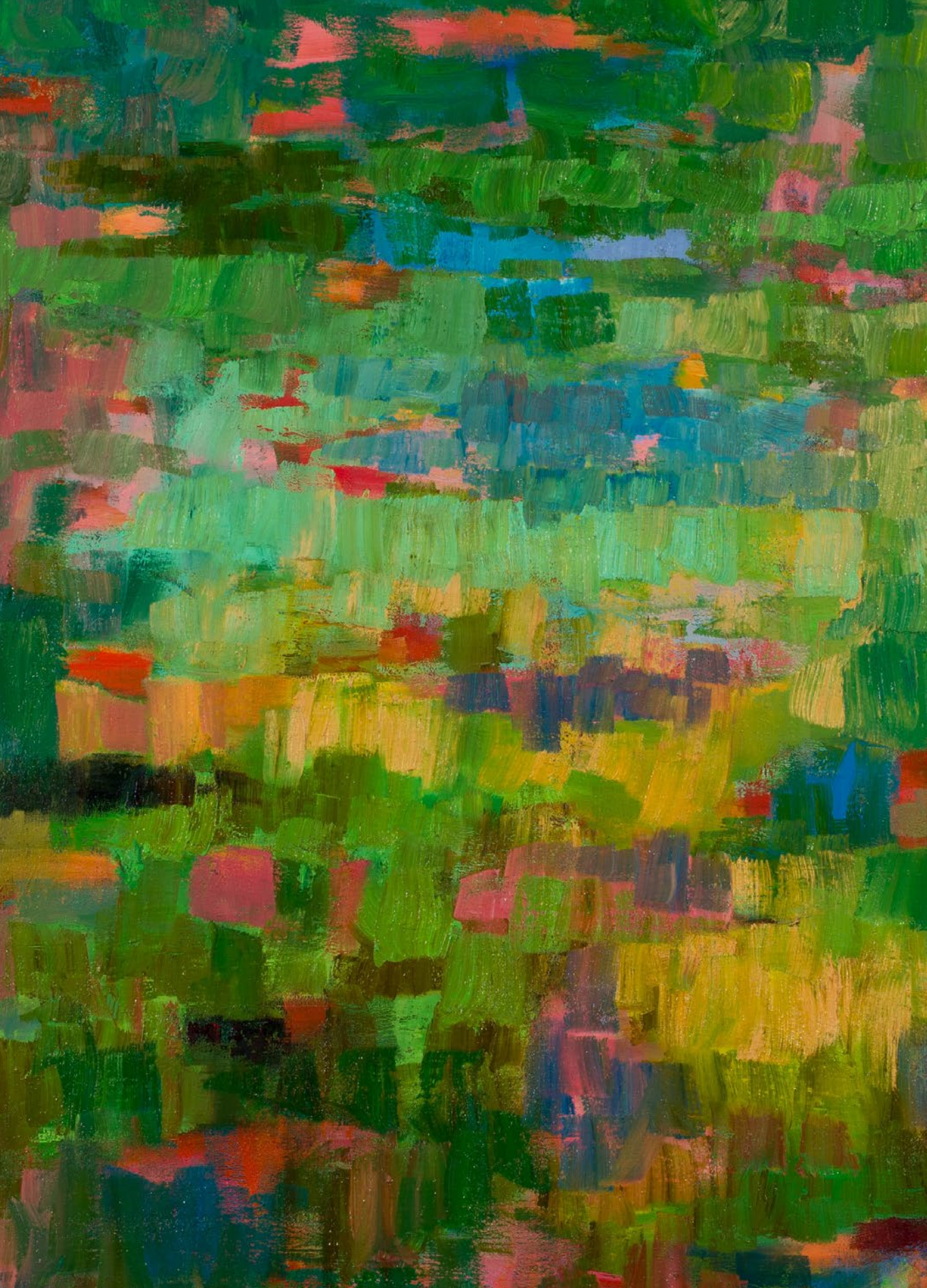




ABOVE & RIGHT (DETAIL)  
*Merging XII*  
oil on linen  
130 x 130 cm







ABOVE & LEFT (DETAIL)  
*Merging XI*  
oil on linen  
110 x 110 cm





*Merging XV*  
oil on linen  
95 x 185 cm



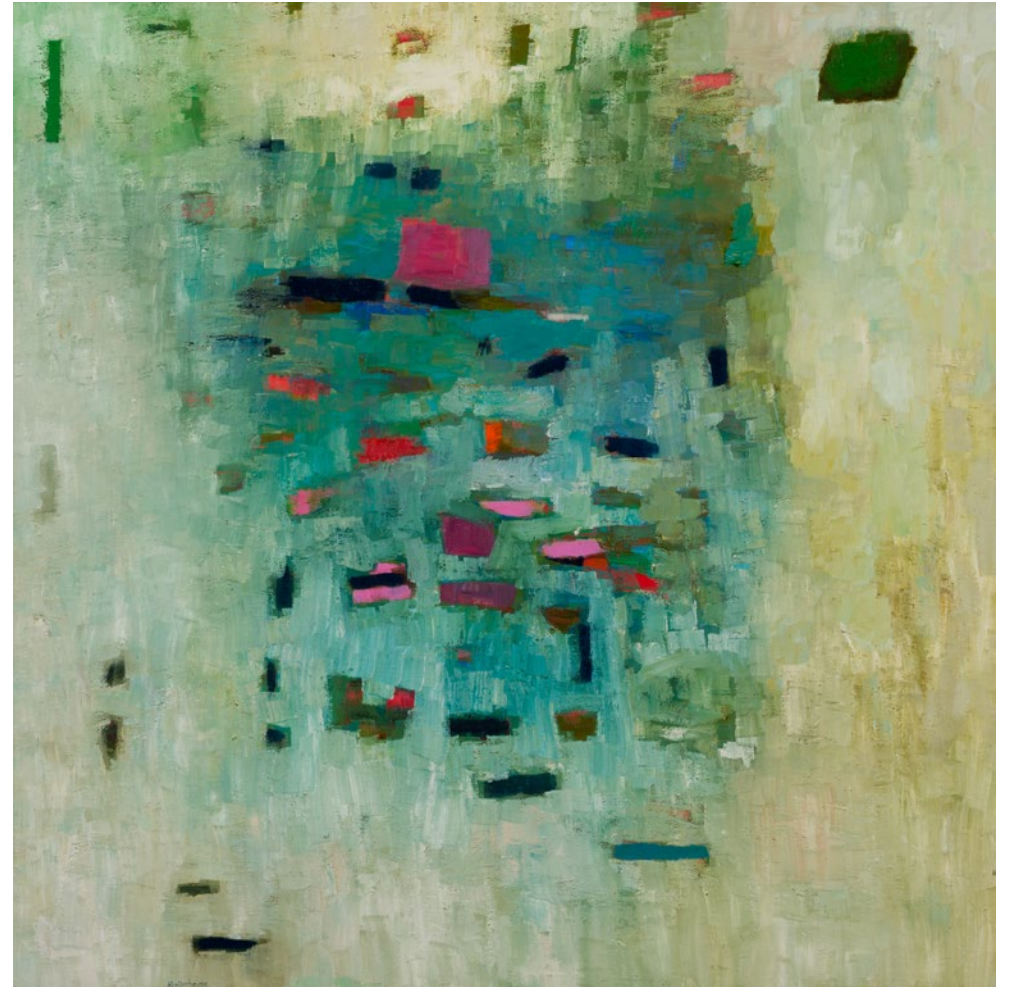


*Merging X*  
oil on linen  
50 x 50 cm





ABOVE & PAGES 24-25 (DETAIL)  
*Merging XVII*  
 oil on linen  
 130 x 130 cm

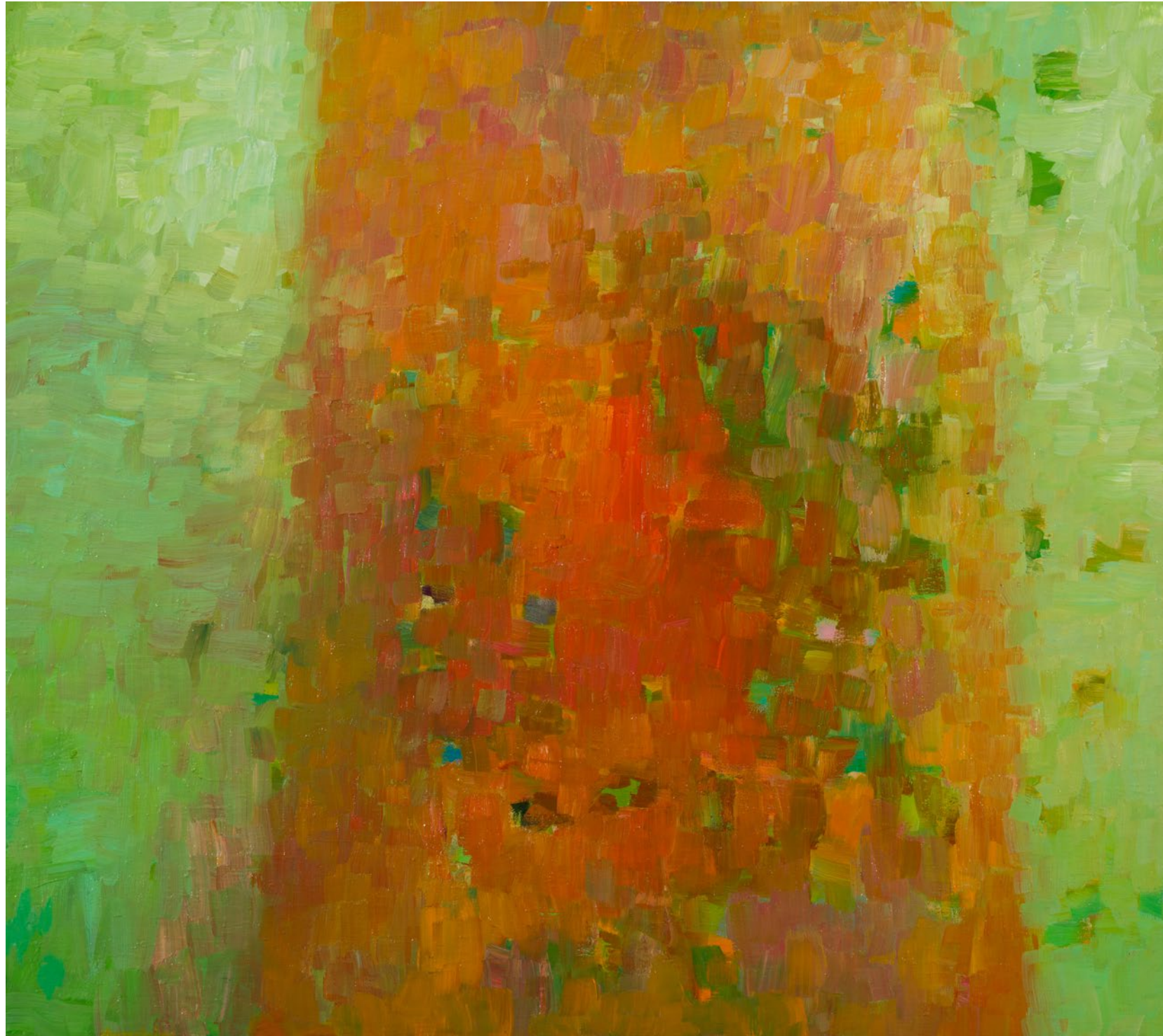


*Merging XIII*  
 oil on linen  
 120 x 120 cm









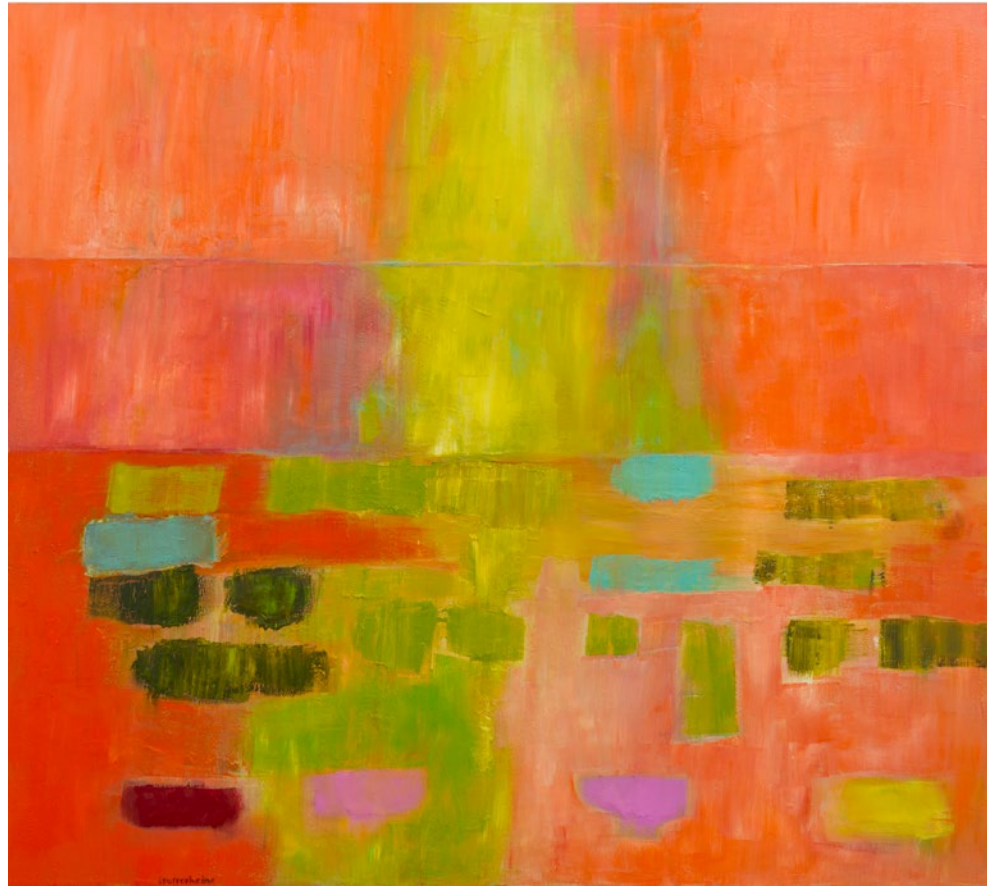
*Merging XVI*  
oil on linen  
80 x 90 cm



*Falling X*  
oil on canvas  
90.5 x 70.5 cm





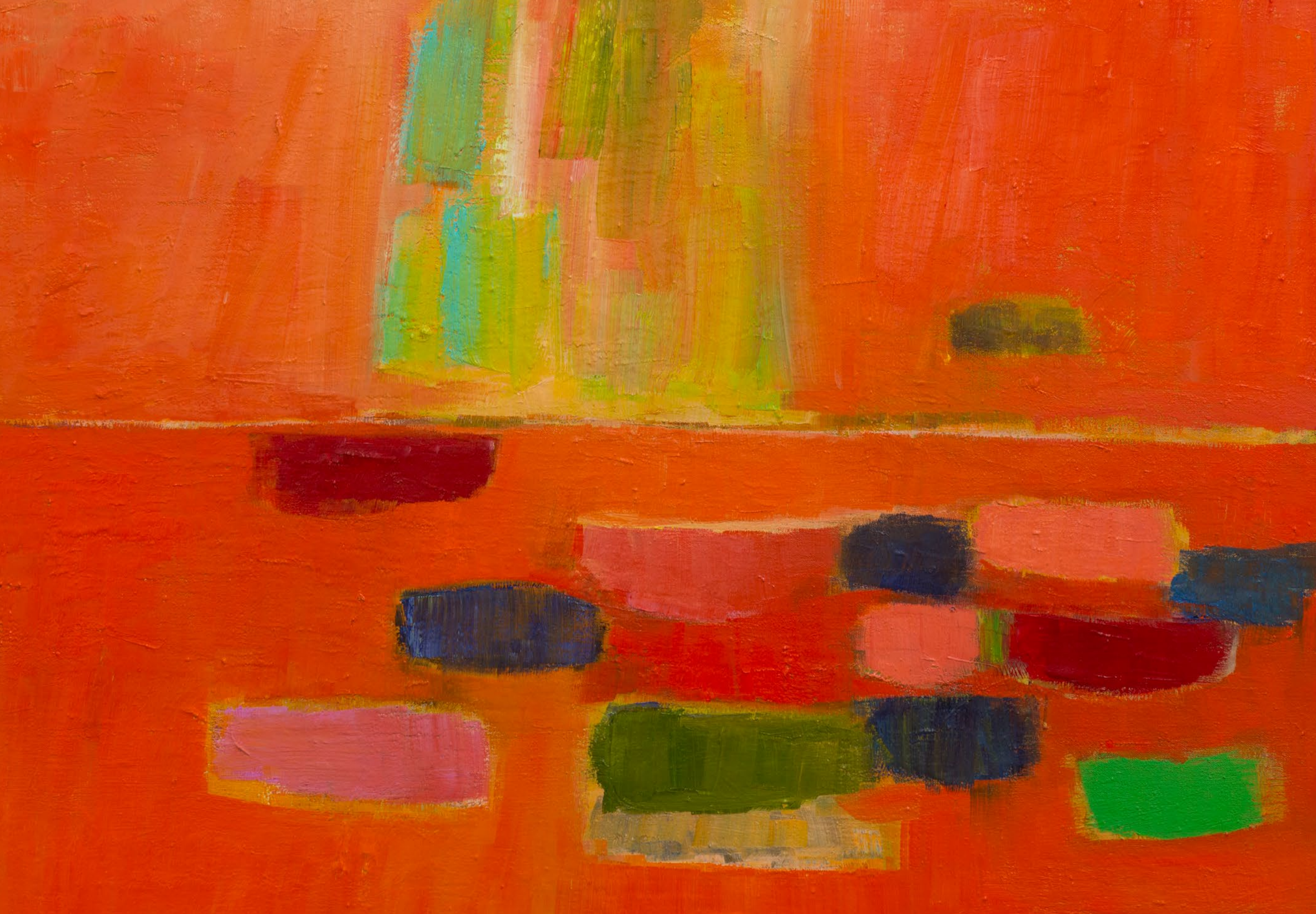


*The Yearning VIII*  
oil on linen  
95 x 105 cm



ABOVE & PAGES 32-33 (DETAIL)  
*The Yearning X*  
oil on linen  
80 x 80 cm

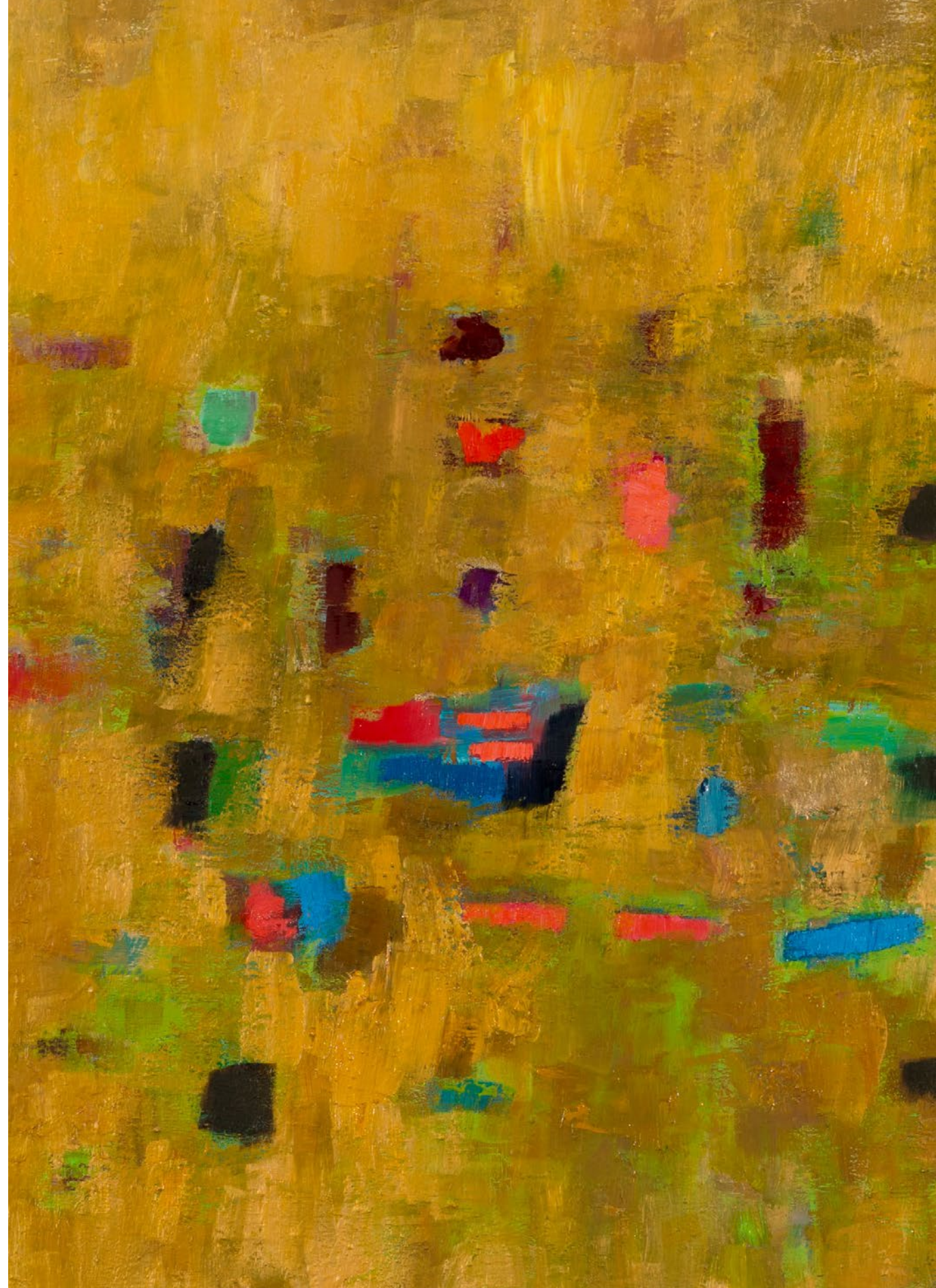








ABOVE & RIGHT (DETAIL)  
*Merging XIV*  
oil on linen  
110 x 110 cm







LEFT (DETAIL)  
*Merging X*  
oil on linen  
50 x 50 cm



## BIOGRAPHY

### PENELOPE STUTTERHEIME

(b. 1958, Cape Town, South Africa)

Penelope Stutterheime is a South African artist currently living and working in Cape Town. She began painting seriously in her early twenties, is largely self-taught and has been painting for over three decades.

The daughter of a forester, Stutterheime developed her intense love for landscape as a child, growing up in Newlands Forest, Cape Town. Later she studied part-time with the artist Simon Stone and the late Bill Ainslie, one of South Africa's finest abstractionists.

Stutterheime's work is highly symbolic, drawing from dream images and the unconscious. Conveyed through colour and form, the images are a representation of transformation. Her paintings are a portrayal of her own inner spiritual process.

'The work reveals a slow unfolding, which continues still, of finding my voice, my dance, my melody. It is nourished by intense feeling, emotion contained on a white canvas, to be felt, to be experienced, to be read from the place where no words yet lie', says Stutterheime.

Stutterheime has participated in solo and group exhibitions consistently over the past thirty years. Her paintings are included in private and corporate collections around the world including Investec, Nashua, Cazenove and Old Mutual.



EVERARD READ

CAPE TOWN | JOHANNESBURG | LONDON

CIRCA

EVERARD READ

LONDON

*Modern and contemporary art from Southern Africa*

Everard Read London | 80 Fulham Road | London SW3 6HR

+44 (0)20 7590 9991 | [info@everardlondon.com](mailto:info@everardlondon.com) | [www.everardlondon.com](http://www.everardlondon.com)