

LIONEL SMIT

Destructure



LIONEL SMIT

Destructure

10 May – 8 June 2019

EVERARD READ | LONDON



'Any human face is a claim on you, because you can't help but understand the singularity of it, the courage and the loneliness of it.'

Marilynne Robinson

In this new body of work, *Destructure*, Lionel Smit continues to explore themes of identity through portraiture on canvas and bronze sculptures. For the artist, the human face offers an endless source of study and his work accentuates facial characteristics through bold swathes of colour and brush techniques, highly-textured bronzes and vivid patinas.

Smit's portraits reflect the mixed heritage of the Western Cape communities in which he lives and works and which has become central to his exploration of identity. The subjects in his portraits exude strength and dignity; some have a meditative quality while others evoke a sense of vulnerability conveyed by the sitter's averted gaze or melancholy expression.

Smit's work is defined by a profound and ongoing dialogue between painting and sculpture. He grew up in a world of sculpture and his

father's sculpture studio played a central role in his childhood. 'I started off with clay – so that's my reference point. ... And that's the way I approach painting. I approach it like sculpture, adding pieces until the image emerges.'

Smit began working in clay from a young age but later shifted his focus to painting, perhaps to claim his own artistic identity. When he returned to making sculpture several years ago, it was his painting that deeply informed his sculptural works. 'I want the sculptures to mimic the paintings, I almost try to merge them in approach, [and] to translate paintings in a three-dimensional form. In my head, I see the pieces of clay as brush strokes. At one stage while working on a sculpture, I found myself building the plaster of Paris with a brush because I liked to see the brushstrokes and the drips.'

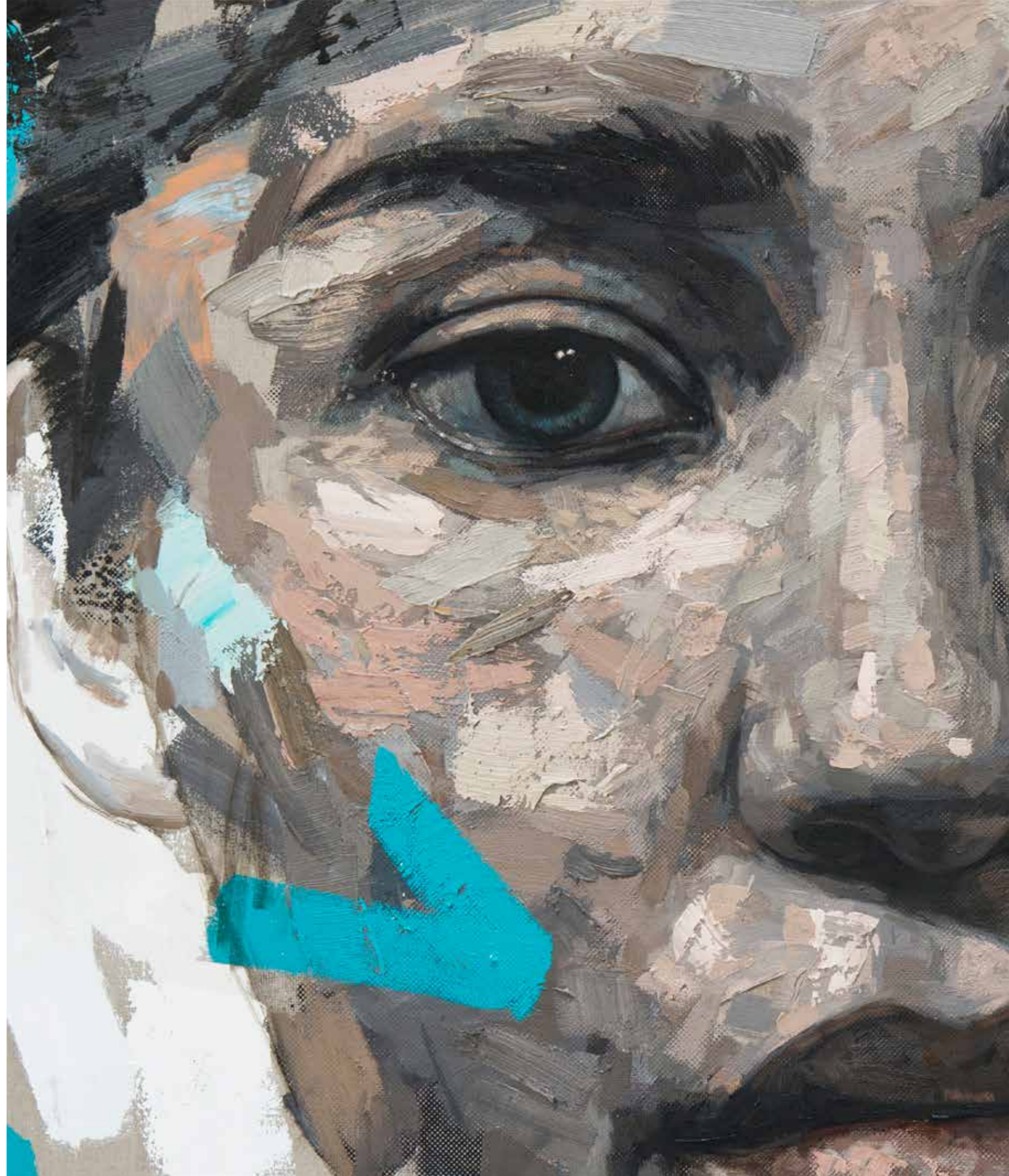
LEFT
Restructure
Edition of 12
bronze
49 x 32 x 28 cm

PAGE 1 (DETAIL)
Pulse
oil on linen
120 x 120 cm

PAGE 2
Emerge (Blue)
Edition of 10
silkscreen on archival paper
90 x 70 cm



Stable Form
oil and silkscreen on linen
140 x 170 cm





Aligned #1
oil on linen
170 x 230 cm



Aligned #2
oil on linen
170 x 230 cm



Formulate (Charcoal)
Edition of 20
silkscreen on archival paper
76 x 56 cm



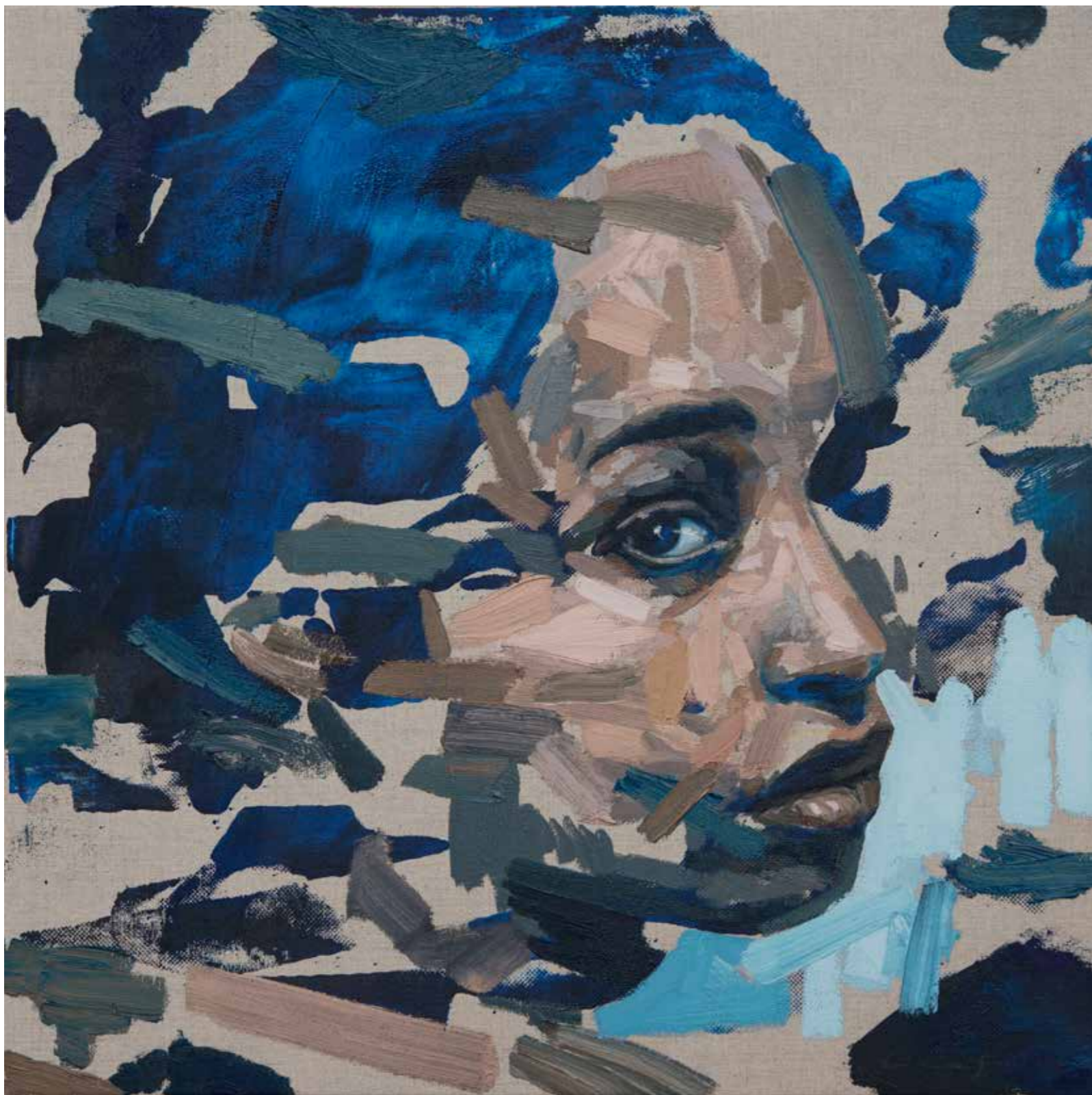
Formation Series #3
Edition of 20
etching on Somerset
75.5 x 57 cm



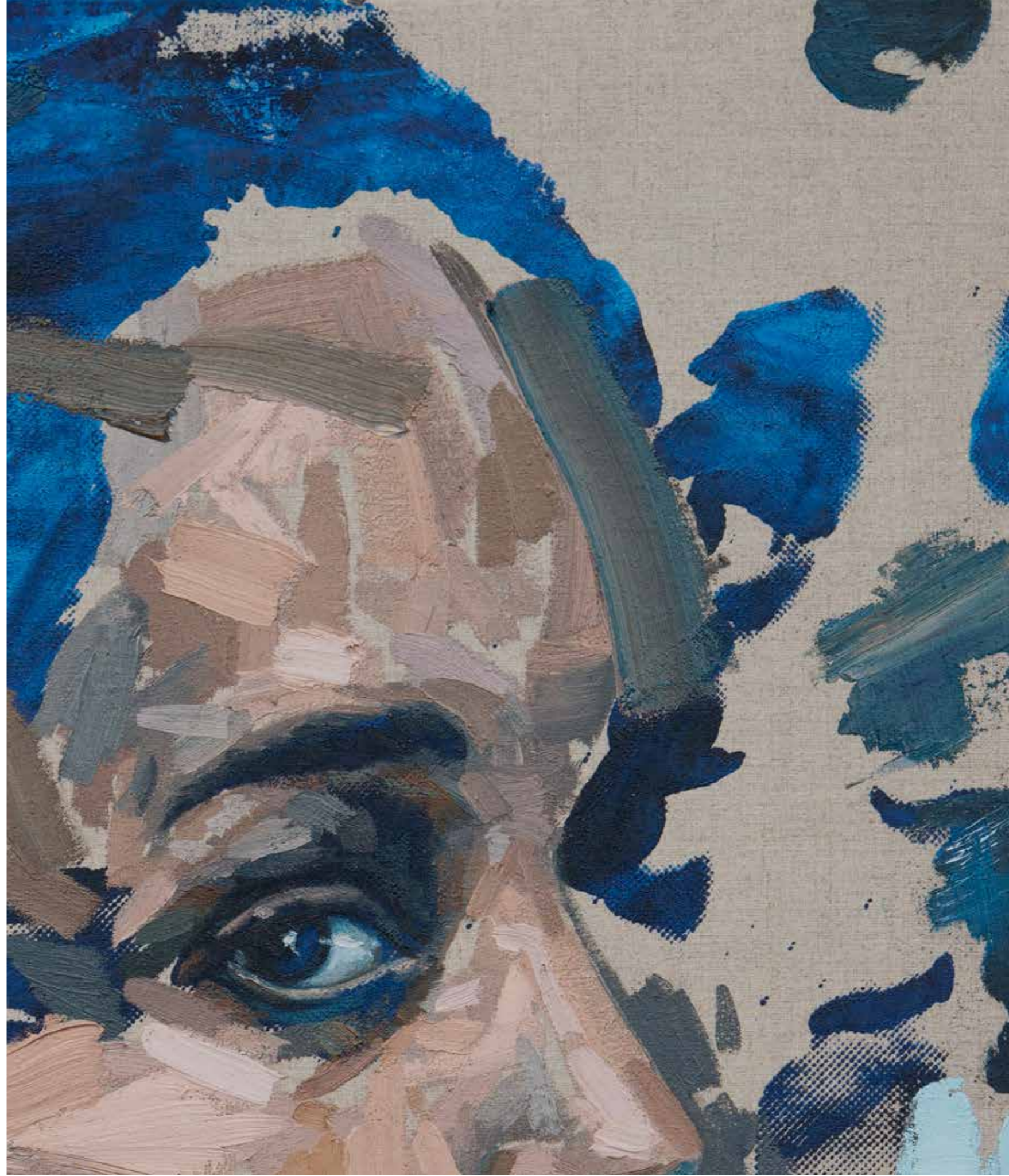
Formulate (Blue)
Edition of 20
silkscreen on archival paper
100 x 70 cm



Formulate (Gold)
Edition of 20
silkscreen on archival paper
100 x 70 cm



Emerging Facets
oil and silkscreen on linen
60 x 60 cm

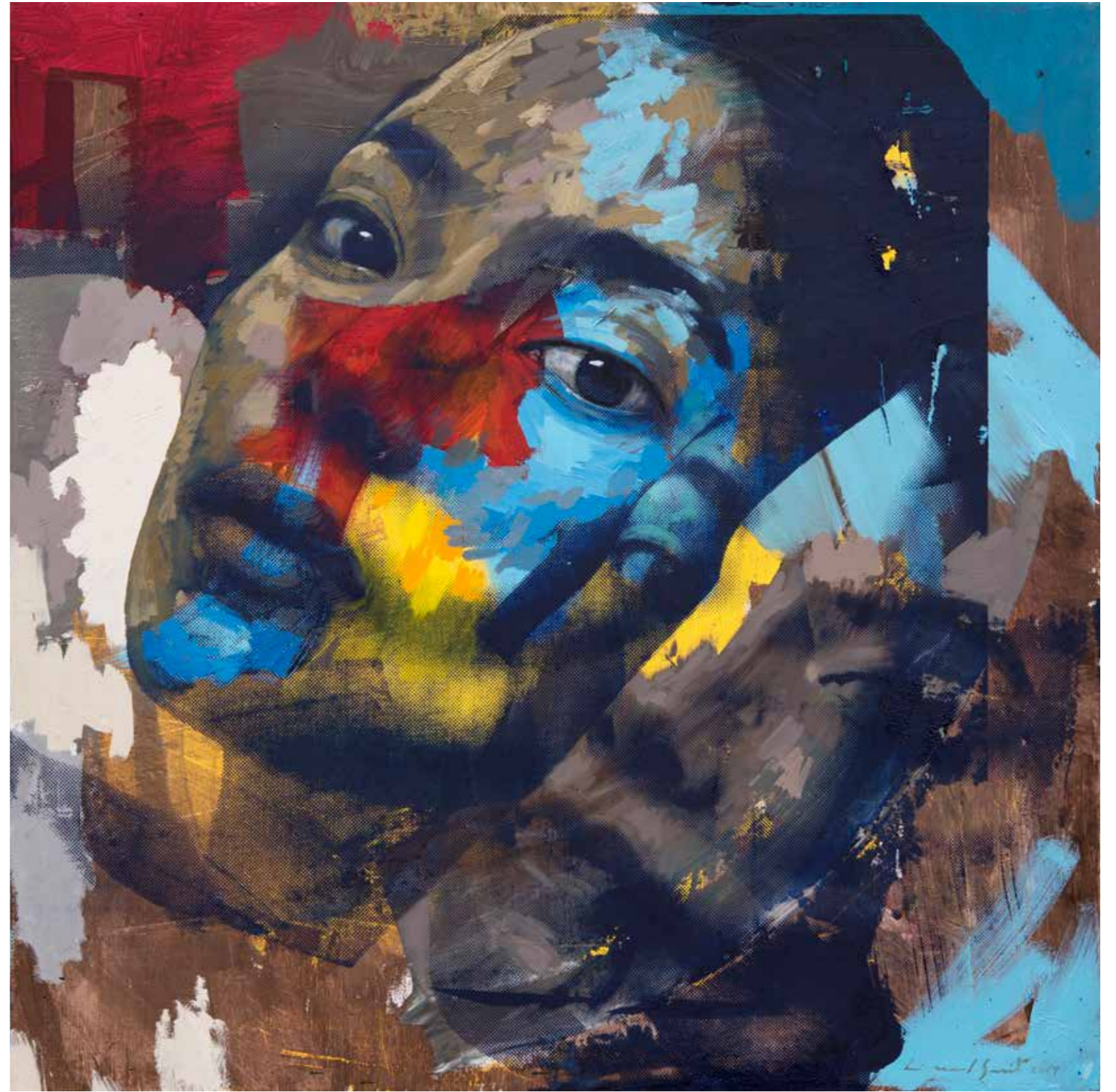




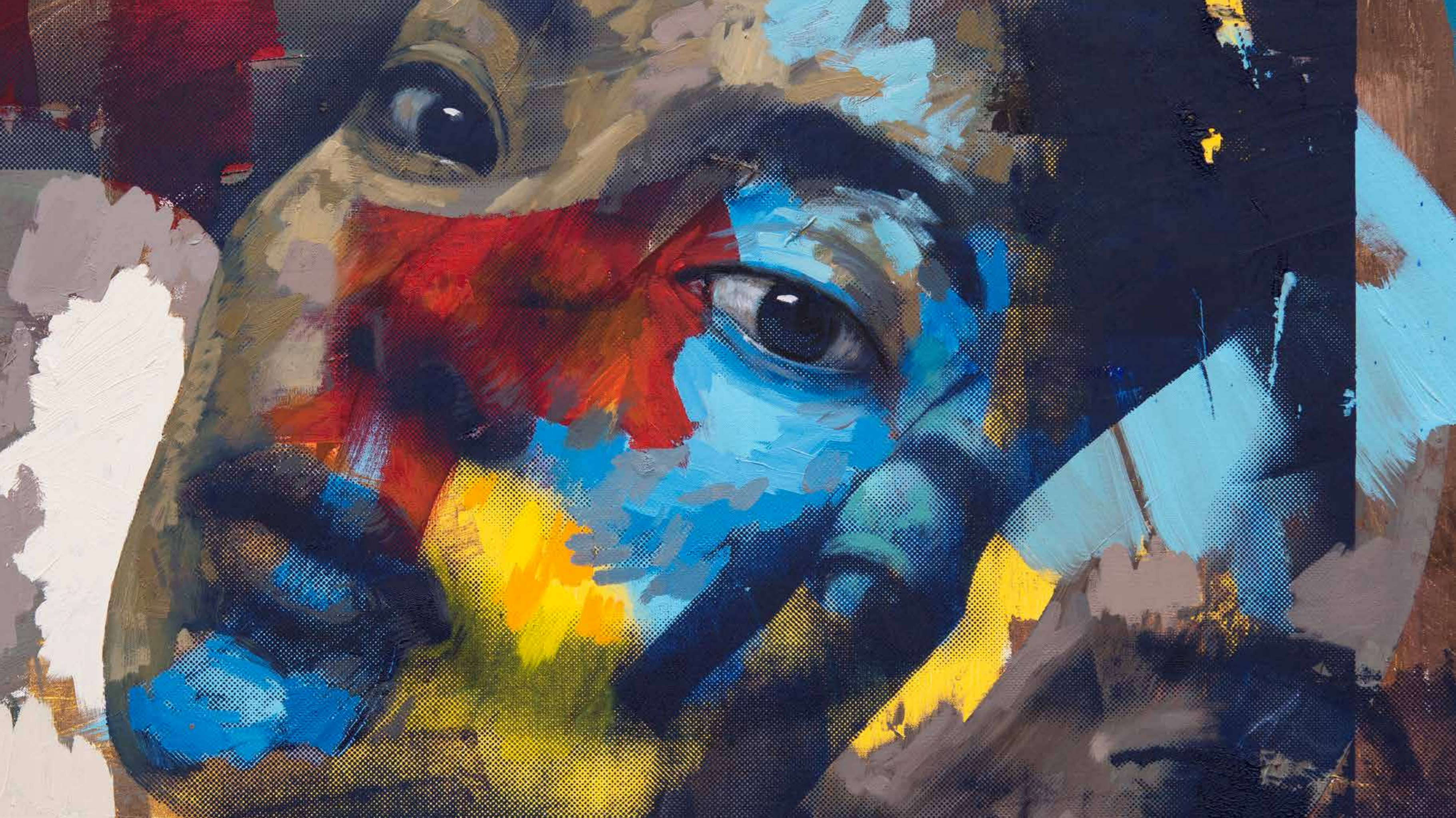
Re-Emerge
oil and silkscreen on linen
60 x 60 cm



Insurgency
oil and silkscreen on linen
90 x 90 cm



Divergent
oil and silkscreen on linen
90 x 90 cm





Complex Stage
oil and silkscreen on linen
140 x 170 cm



Pulse
oil on linen
120 x 120 cm



Initiate Series
oil and silkscreen on linen
170 x 170 cm



Destructure
oil and silkscreen on linen
170 x 140 cm





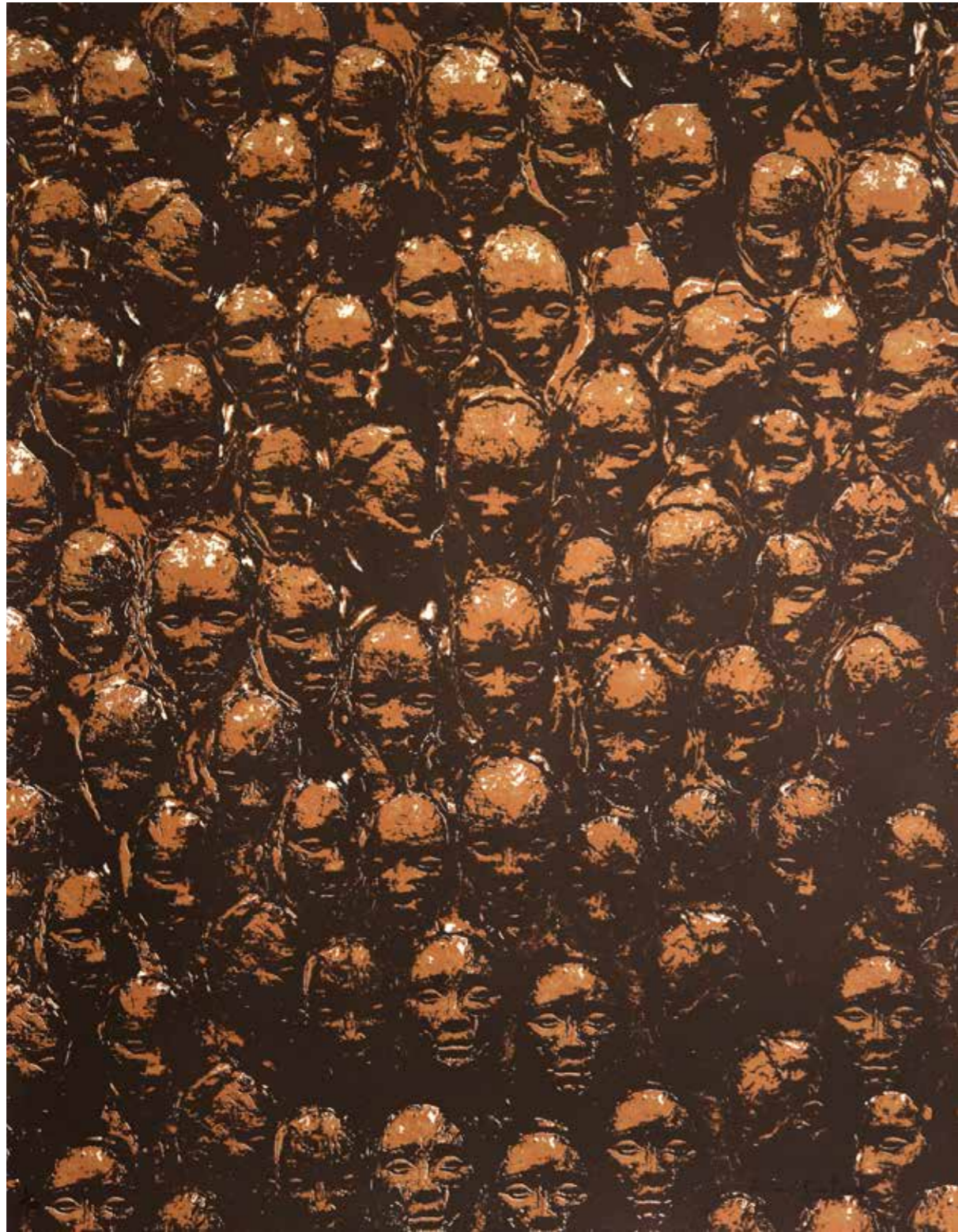
Placed
oil and silkscreen on linen
140 x 170 cm



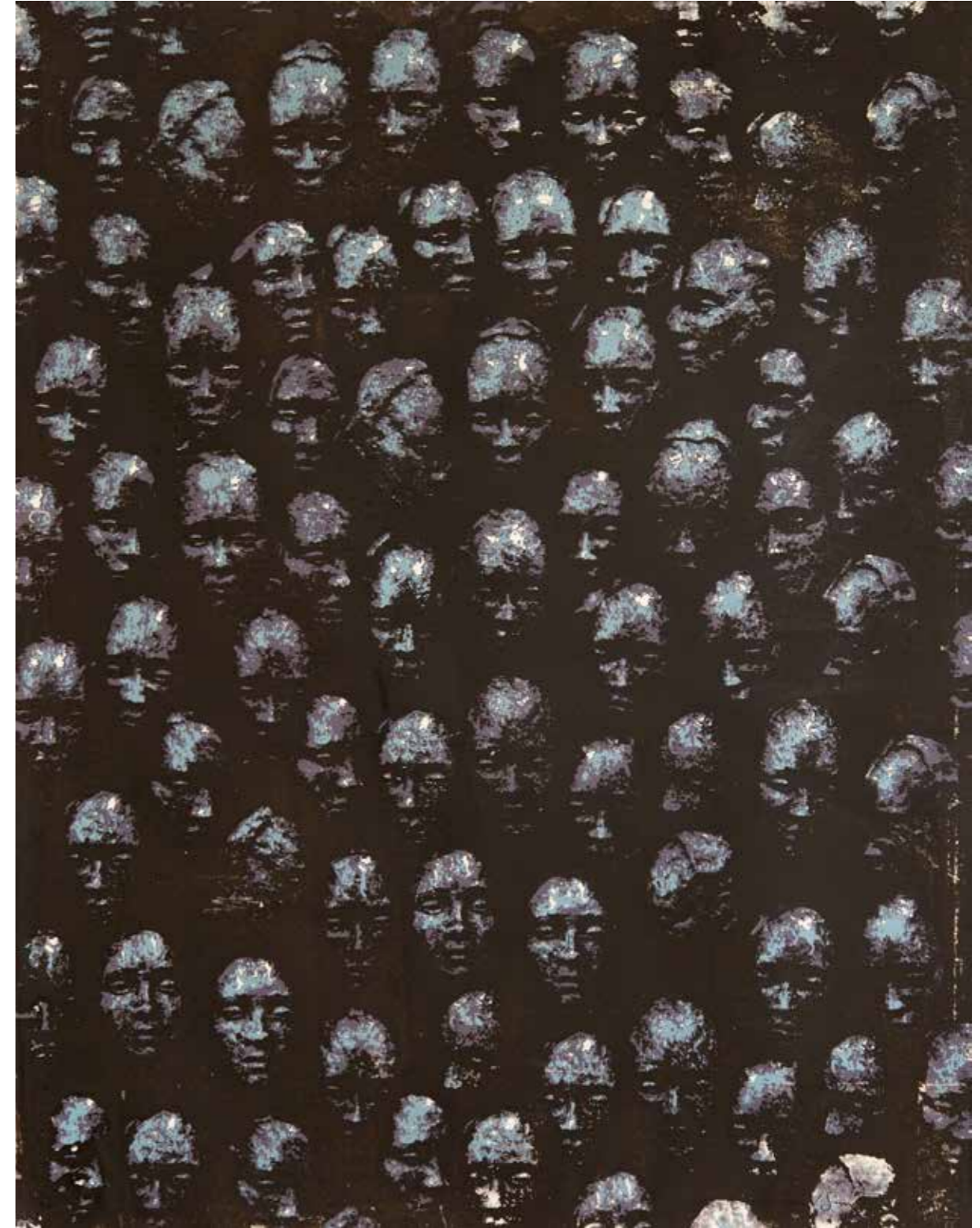


Status #2
Edition of 12
ink and silkscreen on archival paper
106 x 76 cm





Emerge (Brown)
Edition of 10
silkscreen on archival paper
90 x 70 cm



Emerge (Blue)
Edition of 10
silkscreen on archival paper
90 x 70 cm



Restructure
Edition of 12
bronze
49 x 32 x 28 cm





Modernist's Wife
Edition of 8
bronze
66.5 x 39 x 58 cm





Dissemble State
Edition of 8
bronze
99 x 65 x 45 cm



State #1
Edition of 12
bronze
28.5 x 19 x 16 cm



State #4
Edition of 12
bronze
28.5 x 19 x 17 cm



State #5
Edition of 12
bronze
30 x 20 x 17 cm



Fragmented Reoccurrence
Edition of 8
bronze
73 x 38 x 63 cm



Divert #2
Edition of 12
bronze
68 x 53 x 32.1 cm



Medium Malay Girl, 2011
Edition of 12
bronze
96 x 64 x 66 cm





LIONEL SMIT

b.1982 Pretoria, South Africa

Lionel Smit is renowned for his monumental portraiture works on canvas in paintings, sculpture, silkscreen, video and public installations.

Since his first solo exhibition in 2009, Smit's work has been exhibited in South Africa and internationally in galleries, art fairs and public spaces. Recent presentations include a solo exhibition at the Didrichsen Art Museum, Helsinki and public sculptures in the USA including Union Square, New York City.

Smit's painting received the Viewer's Choice Award as part of the BP Portrait Award 2013 at the National Portrait Gallery in London. He has been a featured artist at the Miami Art Fair 2014 and on the cover of Christie's catalogue in London 2009.

Recent exhibitions include *Faces of Identity*, a solo exhibition with Everard Read in London and *Premise*, a solo exhibition with Everard Read in Cape Town.

In recent years, he has been honoured with a Ministerial Award from the South African Department of Culture for Visual Art.

Over the past 10 years he has established a substantial international following with collectors ranging from the Standard Chartered Bank to Laurence Graff Art Collection at Delaire Graff Wine Estate.

Smit's process as an artist remains adaptive, inventive, and physically engaging. He supports several charities on a regular basis with donations of artworks for auction, including ArtAngels, Wild Aid and the MAD Charity.



SELECTED EXHIBITIONS

2018

Obscura, solo exhibition, Museum of Contemporary Art, Miami, USA

2017

Emerge, solo exhibition, .M Contemporary, Sydney

State, solo exhibition, Everard Read, Johannesburg

Exposed, public sculpture installation, Helen Day Art Center, Vermont

Influx, public sculpture installation, Cynthia Reeves, Rhodes Island

Premise, solo exhibition, Circa, Cape Town

Art Central, featured artist, M. Contemporary, Hong Kong

Faces of Identity, solo exhibition, Everard Read, London

2016

Faces, solo exhibition, Didrichsen Art Museum, Helsinki

New Release, solo exhibition, Everard Read, Johannesburg

Morphous, public installation, Union Square, New York

Cape Town Art Fair, featured artist, Everard Read, Cape Town

Trace, solo exhibition, Rook & Raven, New York

Obscura 2, solo exhibition, Rook & Raven, London

Echo, solo exhibition, Cynthia Reeves Gallery, Massachusetts

2015

Recurrence solo exhibition, .M Contemporary, Sydney

JHB Art Fair, featured artist, Everard Read, Johannesburg

Close / Perspective solo exhibition, Everard Read, Johannesburg

Origins, solo exhibition, Rook & Raven, London

Obscura, solo exhibition, Everard Read, Cape Town

Art Central Art Fair, featured artist, Rook & Raven Gallery, Hong Kong

Accumulation of Disorder, installation, Independent Art Projects, MASS
MoCA Campus, USA

2014

Art Taipei, The Cat Street Gallery, Taiwan

Conronym, solo exhibition, The Cat Street Gallery, Hong Kong

Morphous, solo exhibition and installation, Circa, Johannesburg

Cumulus, solo exhibition, Rook & Raven, London

Fugitive Identity, group exhibition, Cynthia Reeves, USA

2013

Art Miami Fair, featured artist, Cynthia Reeves, Miami

IS Sculpture, solo exhibition, IsArt, Tokara, Stellenbosch

Strarta Art Fair, Saatchi Gallery, Rook & Raven, London

Fragmented, solo exhibition, Rook & Raven, London

Accumulation, solo exhibition, Everard Read, Johannesburg

BP Portrait Award Exhibition, Viewer's Choice Award, National Portrait
Gallery, London

Wonder Works Exhibition, The Cat Street Gallery, Hong Kong

Metal Work Public sculpture, Stellenbosch

2012

Compendium, solo exhibition, 34FineArt, Cape Town

Accumulation of Disorder, installation, University of Stellenbosch
Gallery, Stellenbosch

Strata, solo exhibition, Rook and Raven, London

Robert Bowman Gallery, India Art Fair, India

Jhb Art Fair, Everard Read

2011

Surface, solo exhibition, Artspace, Johannesburg

34FineArt, ArtMonaco '11, Monaco

2010

Out of the Office, group exhibition, Kunstmuseum Bochum, Germany

Cynthia Reeves Projects, Art Miami, USA

We are not Witches, Saatchi Gallery, London

Submerge, solo exhibition, 34FineArt, Cape Town

2009

F.A.C.E.T., Charity Auction, Christie's, London

Relate, solo exhibition, Grande Provence, Franschhoek

LEFT (DETAIL)

Aligned #1

oil on linen

170 x 230 cm



QUALIFICATIONS AND AWARDS

- 2013** Visitor's Choice Award, BP Portrait Award, National Portrait Gallery, London
- 2013** Ministerial Award from Department of Culture for Visual Art, Western Cape Government
- 2009** Merit Award, Vuleka, Sanlam Art Competition, Cape Town
- 2008** Achievement Award, Pro Arte School of Arts
- 2000** First prize in the MTN Art Colours Awards of Gauteng
- 1999/2000** Best painting student Pro Arte School of Arts

CATALOGUES

- Cumulus LIONEL SMIT, Rook & Raven, London 2014
- Formulation LIONEL SMIT, Tokara, Stellenbosch 2013
- Accumulation LIONEL SMIT, Everard Read, Johannesburg 2013
- Strata LIONEL SMIT, Rook & Raven, London, 2012
- Surface LIONEL SMIT, Artspace, Johannesburg 2011
- We are not Witches, Saatchi Gallery, London 2011
- Submerge LIONEL SMIT, 34FineArt, October 2010
- Christie's, F.A.C.E.T (catalogue cover), October 2009
- Residue, Grande Provence Gallery, October 2009
- Group therapy, Sandton Civic Gallery, 2005
- Pretoria, Everard Read Gallery, November 2004

SELECTED COLLECTIONS

- Ellerman Contemporary
- Standard Chartered Bank
- Laurence Graff
- Rand Merchant Bank
- European Investment Bank
- Johannesburg City Council
- Saronsberg Wine Estate
- Grainvest Futures
- Delaire Graff Wine Estate
- South African Embassy, Nigeria
- Parkdev
- Johann Jacobs Museum

LEFT (DETAIL)

Complex Stage
oil and silkscreen on linen
140 x 170 cm

PAGE 29

Re-Emerge
oil and silkscreen on linen
60 x 60 cm

Emerging Facets
oil and silkscreen on linen
60 x 60 cm



EVERARD READ | LONDON



ER JOHANNESBURG | CAPE TOWN | LONDON | FRANSCHHOEK

Modern and contemporary art from southern Africa

Everard Read London | 80 Fulham Road | London SW3 6HR
+44 (0)20 7590 9991 | info@everardlondon.com | www.everardlondon.com