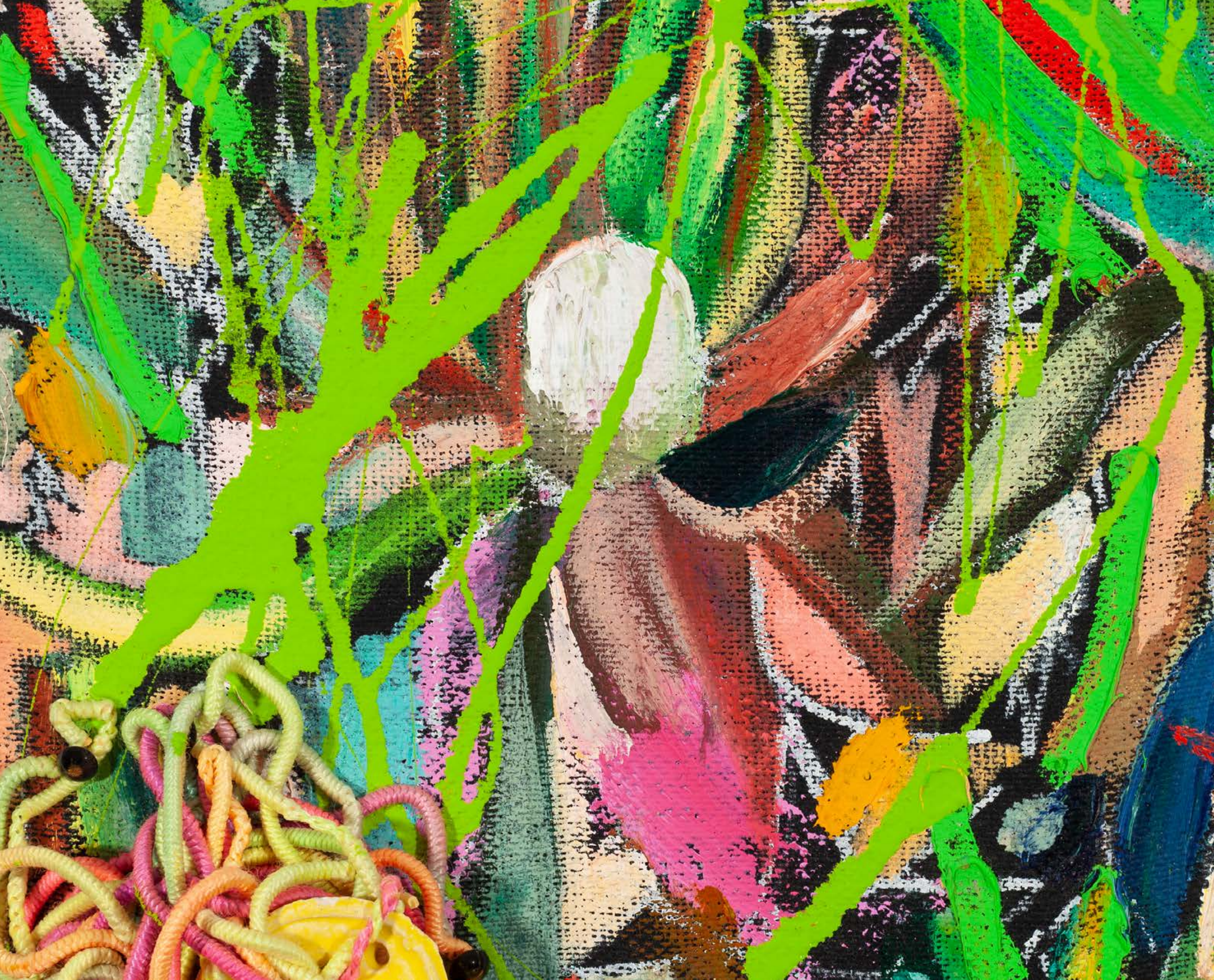


WINTER EXHIBITION

December 2021 – January 2022





WINTER EXHIBITION

11–17 December 2021

4–15 January 2022

(Gallery closed from 18 December 2021 – 3 January 2022)

FEATURED ARTISTS

SANELL AGGENBACH | BEEZY BAILEY | NICCOLA BAILEY

DEBORAH BELL | NIC BLADEN | ARABELLA CACCIA

JOHN CAPLE | WILMA CRUISE | GUY DU TOIT

LAURA ELLENBERGER | JANE EPEL | TERESA KUTALA FIRMINO

CHONAT GETZ | LIZA GROBLER | MATTHEW HINDLEY

PHILLEMONT HLUNGWANI | CLAUDE JAMMET | DYLAN LEWIS

NOMTHUNZI MASHALABA | LUCINDA MUDGE | NIGEL MULLINS

BRETT MURRAY | DANIEL NAUDÉ | WILLIAM PEERS

LIONEL SMIT | RINA STUTZER | SHANY VAN DEN BERG

BARBARA WILDENBOER | FLORIAN WOZNIAK



SANELL AGGENBACH

Nocturne Swimmer
oil on canvas
98 x 73 cm
(38 1/2 x 28 5/8 in)



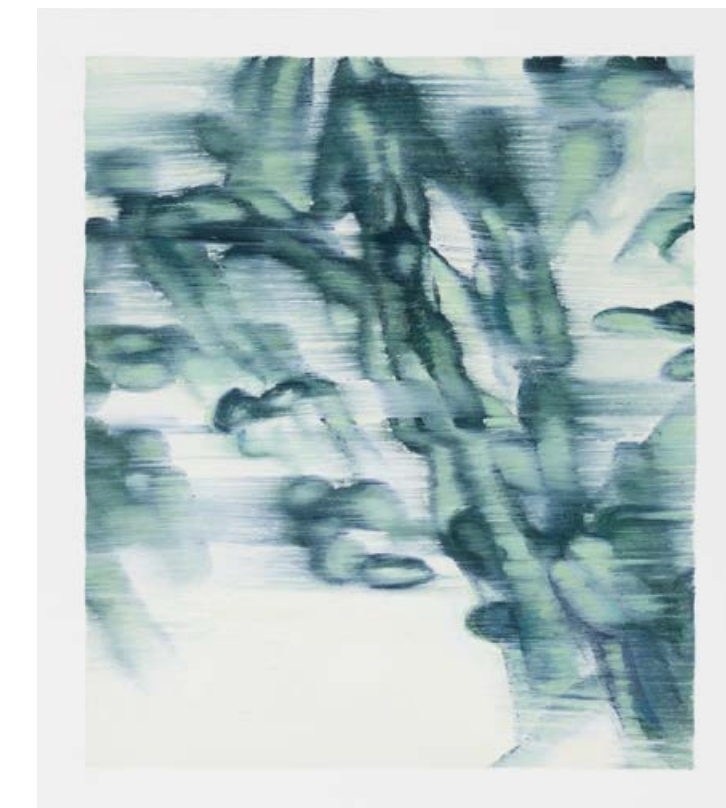
SANELL AGGENBACH

Nocturne Gardenia
oil on canvas
98 x 73 cm
(38 1/2 x 28 5/8 in)



TOP
SANELL AGGENBACH

Natural Selection No. 6
oil on paper
33 x 39 cm
(13 x 15 1/4 in)



ABOVE
SANELL AGGENBACH

Natural Selection No. 10
oil on paper
23.5 x 20 cm
(9 1/4 x 7 3/4 in)



BEEZY BAILEY
Goodbye Jacob
 oil on canvas
 75 x 60 cm
 (29 1/2 x 23 1/2 in)



LEFT
BEEZY BAILEY
Migration Leap
 copperplate etching edition of 30
 33 x 27 cm
 (13 x 10 5/8 in)



RIGHT
BEEZY BAILEY
Reflection Dance
 copperplate etching edition of 30
 33 x 27 cm
 (13 x 10 5/8 in)



LEFT
BEEZY BAILEY
Striped Forest Cat
 copperplate etching edition of 30
 33 x 27 cm
 (13 x 10 5/8 in)



RIGHT
BEEZY BAILEY
Loving the Aliens
 copperplate etching edition of 30
 33 x 27 cm
 (13 x 10 5/8 in)

NICCOLA BAILEY

Loving Friend (Teddy)
bronze edition of 8
10 x 16 x 11 cm
(3 7/8 x 6 1/4 x 4 1/4 in)



NICCOLA BAILEY

Sharing in the Shadow (Luna)
bronze edition of 8
12 x 15.5 x 8.5 cm
(4 5/8 x 6 x 3 1/4 in)



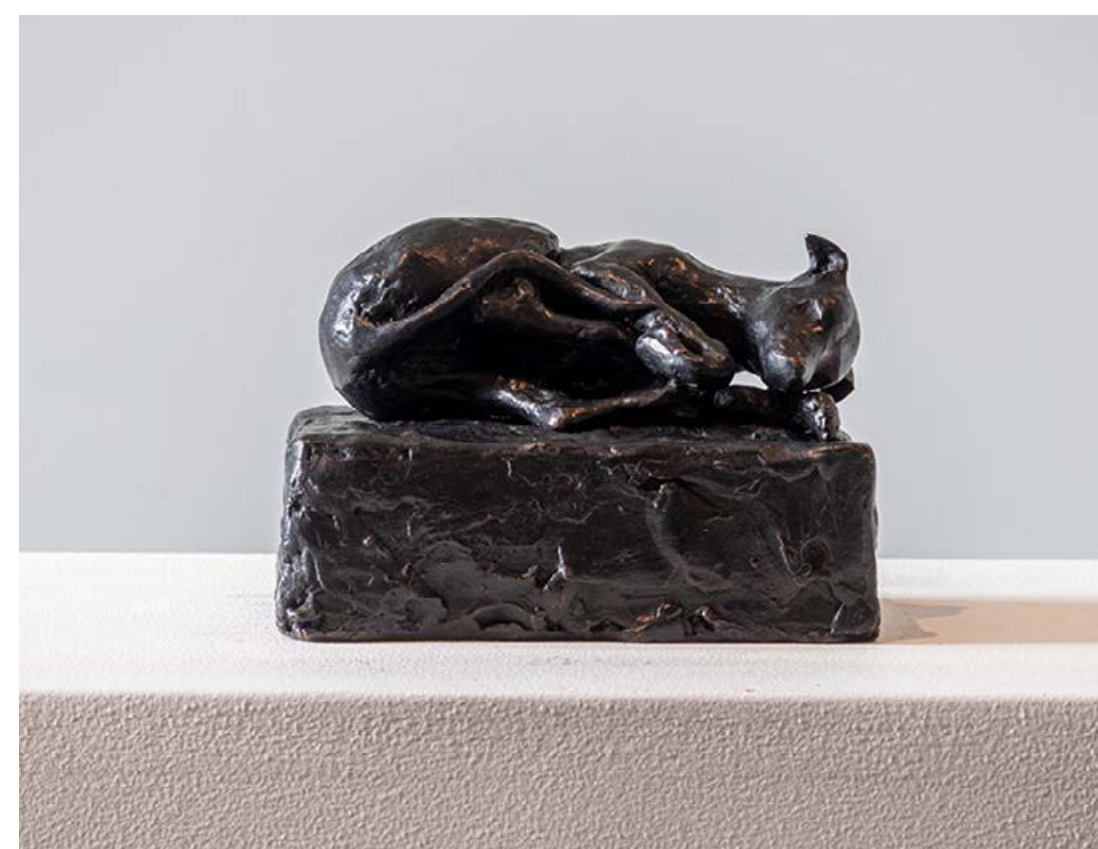
NICCOLA BAILEY

*This Dog Watched Beside
a Bed (Rufus)*
bronze edition of 8
6.5 x 15 x 8 cm
(2 1/2 x 5 7/8 x 3 1/8 in)



NICCOLA BAILEY

Thou Who Lovest Greatly (Mouse)
bronze edition of 8
9 x 12.5 x 10.5 cm
(3 1/2 x 4 7/8 x 4 1/8 in)

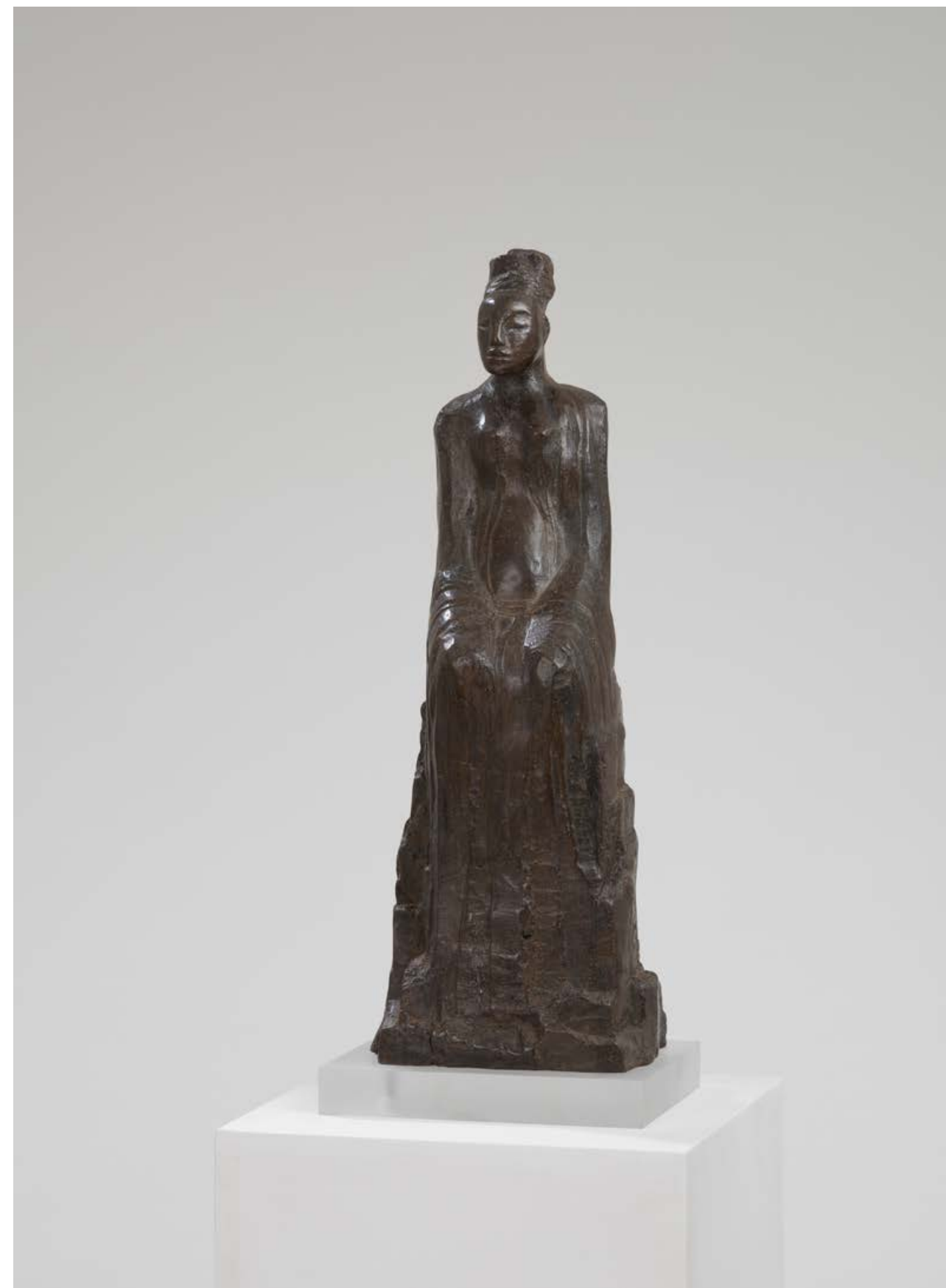




DEBORAH BELL

*Meditation: Cloud on
a Mountain*

bronze edition of 12
58 x 23 x 17 cm
(22 3/4 x 9 x 6 5/8 in)



DEBORAH BELL

As the Earth Senses You

bronze edition of 12
52 x 19 x 14 cm
20 3/8 x 7 3/8 x 5 1/2 in



NIC BLADEN
Erica sparrmannii
 bronze and silver
 41 x 28 x 26 cm
 (16 1/8 x 11 x 10 1/8 in)



ARABELLA CACCIA
Sphere II (unique)
 bronze and ultra marine blue
 28 x 20 x 20 cm
 (11 x 7 3/4 x 7 3/4 in)



JOHN CAPLE
Stick Maker, Somerset
oil on board
81 x 93.3 cm
(31 ⁷/₈ x 36 ⁵/₈ in)



WILMA CRUISE

Eric & Charlotte in Mokoro

edition of 15

34 x 103 x 23 cm

(13 3/8 x 40 1/2 x 9 in)



GUY DU TOIT
Hare on Stairs II
 bronze
 23 x 27 x 8 cm
 (9 x 10 ⁵/₈ x 3 ¹/₈ in)



GUY DU TOIT
Hares on Stairs (wall mounted) II
 bronze
 18 x 21 x 9 cm
 (7 x 8 ¹/₄ x 3 ¹/₂ in)

GUY DU TOIT
Hares on Stairs (wall mounted) IV
 bronze
 20 x 16 x 7 cm
 (7 ³/₄ x 6 ¹/₄ x 2 ³/₄ in)



GUY DU TOIT
Traveller Hare #XVIII
 bronze
 15 cm
 (5 7/8 in)

GUY DU TOIT
Traveller Hare #XIV
 bronze
 15 cm
 (5 7/8 in)

GUY DU TOIT
Traveller Hare #V
 bronze
 15 cm
 (5 7/8 in)

GUY DU TOIT
Traveller Hare #IX
 bronze
 15 cm
 (5 7/8 in)



LAURA ELLENBERGER
Untitled II
 Cyanotype on mulberry
 paper
 41 x 31 cm
 (16 1/8 x 12 1/8 in)



TOP
 JANE EPPEL
Infinity I
 copperplate etching edition of 10
 34 x 76 cm
 (13 3/8 x 29 7/8 in)



ABOVE
 JANE EPPEL
Infinity II
 copperplate etching edition of 3
 34 x 76 cm
 (13 3/8 x 29 7/8 in)



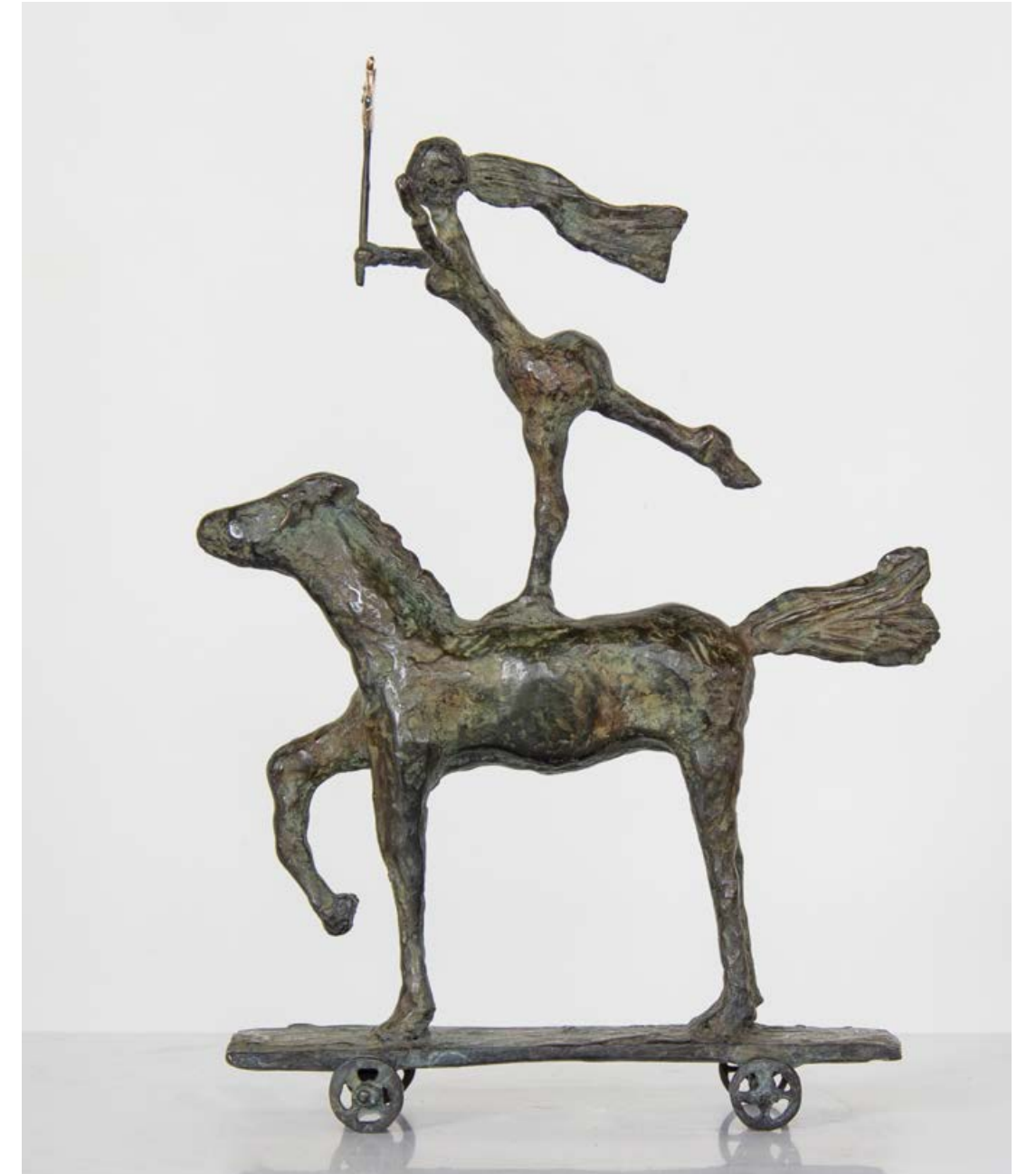
TERESA KUTALA FIRMINO

Untitled II
mixed media on canvas
76 x 76 cm
(29 7/8 x 29 7/8 in)



TERESA KUTALA FIRMINO

Untitled I
mixed media on canvas
76 x 76 cm
(29 7/8 x 29 7/8 in)



CHONAT GETZ

Lady Godiva
bronze edition of 15
37.2 x 26.5 x 11 cm
(14 5/8 x 10 3/8 x 4 1/4 in)



LIZA GROBLER

Prom Persuasions

oil and mixed media on handspun cotton
and board

40 x 40 cm

(15 5/8 x 15 5/8 in)



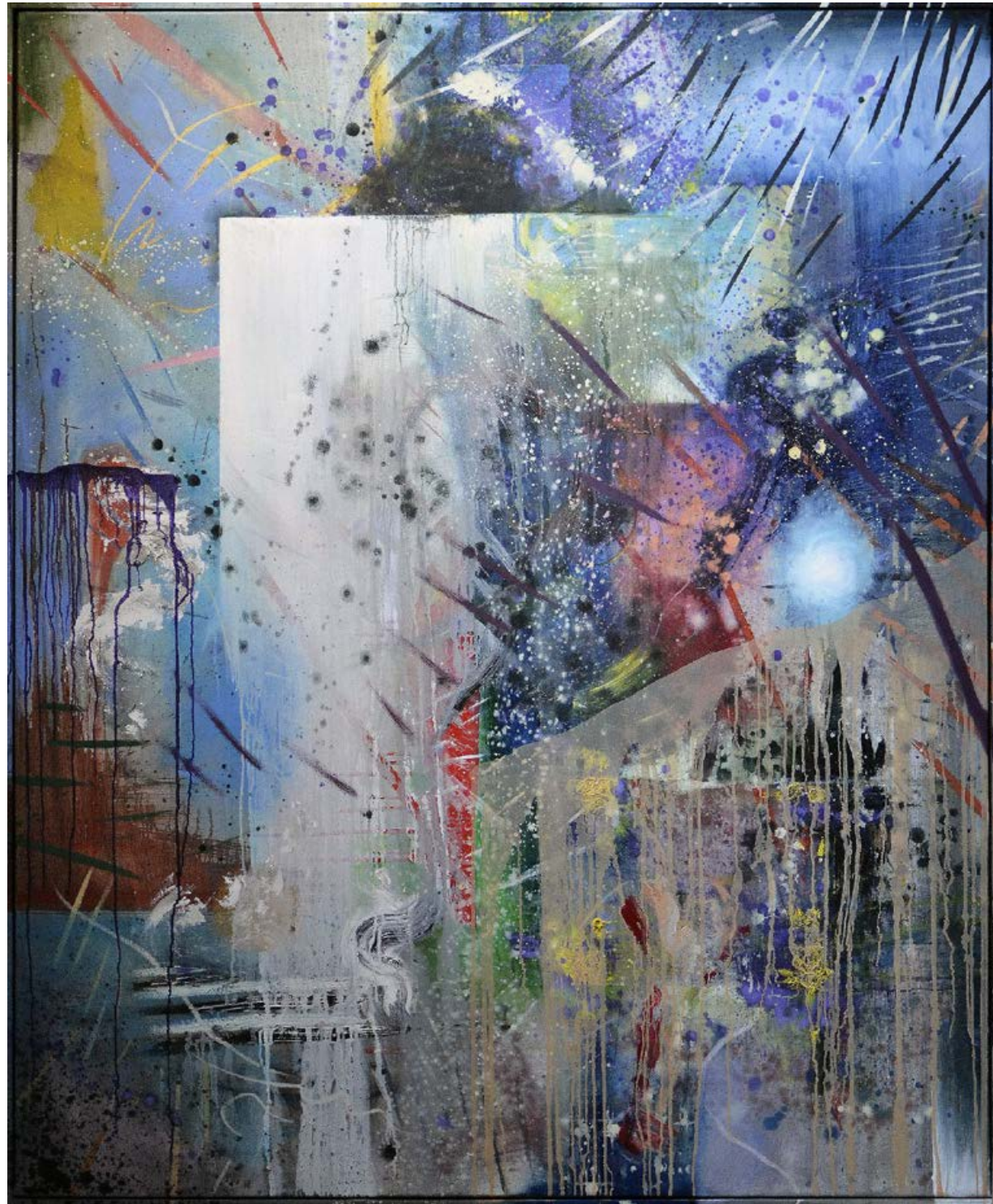
LIZA GROBLER

Spirits of the Klein Karoo

oil and mixed media on handspun cotton
stretched over board

30 x 30 cm

(11 3/4 x 11 3/4 in)



MATTHEW HINDLEY

Knowing me, knowing you

oil on canvas

173 x 142 cm

(68 x 55 7/8 in)



MATTHEW HINDLEY

Mothers are like Rainbows

oil on Italian polycotton

100 x 100 cm

(39 1/4 x 39 1/4 in)



PHILLEMOM HLUNGWANI

N'wansati Wa Xiviri II

etching edition of 10

57 x 72 cm

(22 3/8 x 28 1/4 in)



PHILLEMOM HLUNGWANI

Matimba Ya N'wansati Malendzeni Ka

Mbilu

etching edition of 10

98 x 135 cm

(38 1/2 x 53 1/8 in)



CLAUDE JAMMET

Ball and Claw

oil on paper on canvas

100 x 80 cm

(39 1/4 x 31 3/8 in)



TOP
DYLAN LEWIS

P003 Torso III
ink on German Hahnemühle
etching paper edition of 75
64 x 91.5 cm
(25 1/8 x 36 in)

ABOVE
DYLAN LEWIS

P004 Torso IV
ink on German Hahnemühle
etching paper edition of 75
64 x 91.5 cm
(25 1/8 x 36 in)



DYLAN LEWIS

S-H 11c Interrelation II,
Maquette I
bronze edition of 12
64 x 57 x 34 cm
25 1/8 x 22 3/8 x 13 3/8 in



DYLAN LEWIS

S-H 25 f Interrelation VIII
Maquette
bronze edition of 8
85 x 36 x 51 cm
33 3/8 x 14 1/8 x 20 in



DYLAN LEWIS

S-H 30 f Beast with Two Backs

bronze edition of 100

17 x 7.5 x 15 cm

(5 7/8 x 2 7/8 x 5 7/8 in)



DYLAN LEWIS

S-H 77 (2a) Trance

bronze edition of 100

21 x 9 x 7 cm

(8 1/4 x 3 1/2 x 2 3/4 in)



DYLAN LEWIS

S-H 77 (3a) Trance

bronze edition of 100

21 x 10.5 x 10 cm

(8 1/4 x 4 1/8 x 3 7/8 in)



DYLAN LEWIS

S-H 77 (5a) Trance

bronze edition of 100

21 x 7.5 x 8 cm

(8 1/4 x 2 7/8 x 3 1/8 in)



DYLAN LEWIS

S385 – Lioness Bust III
 bronze edition of 15
 49 x 24 x 27 cm
 (19 1/4 x 9 3/8 x 10 5/8 in)



DYLAN LEWIS

S377 Striding Fragment miniature
 bronze edition of 100
 14 x 5 x 23.5 cm
 (5 1/2 x 2 x 9 1/4 in)



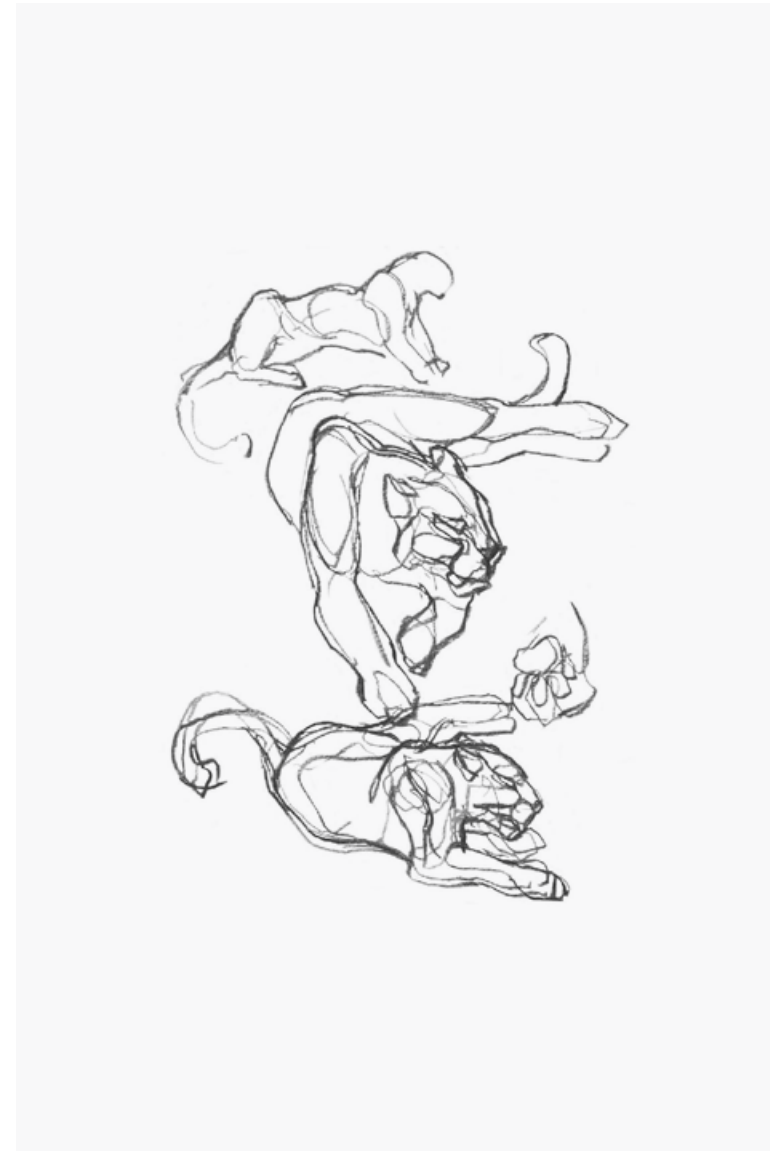
DYLAN LEWIS

P007 Leopard Study

ink on German Hahnemuhle
etching paper edition of 75

91.5 x 64 cm

(36 x 25 1/8 in)



DYLAN LEWIS

P011 Leopard Study III

ink on German Hahnemuhle
etching paper edition of 75

42 x 29.7 cm

(16 1/2 x 11 5/8 in)



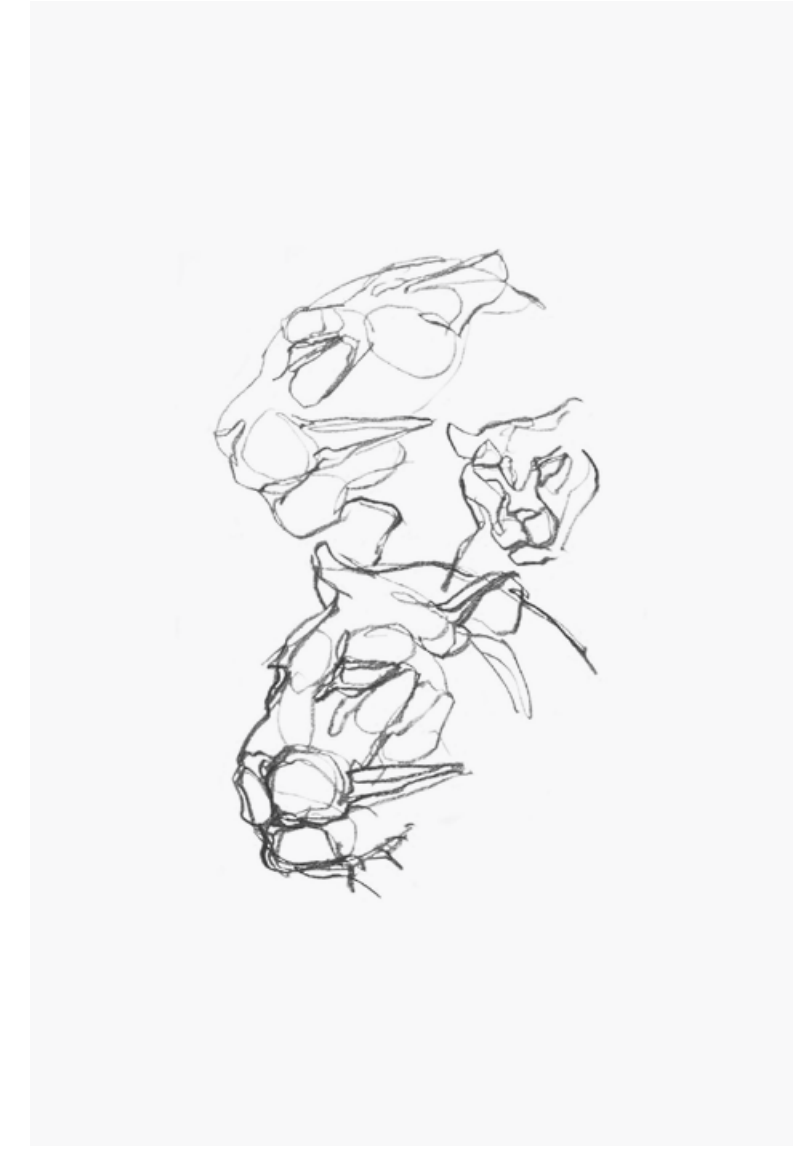
DYLAN LEWIS

P008 Leopard Heads I

ink on German Hahnemuhle
etching paper edition of 75

91 x 64 cm

35 3/4 x 25 1/8 in



DYLAN LEWIS

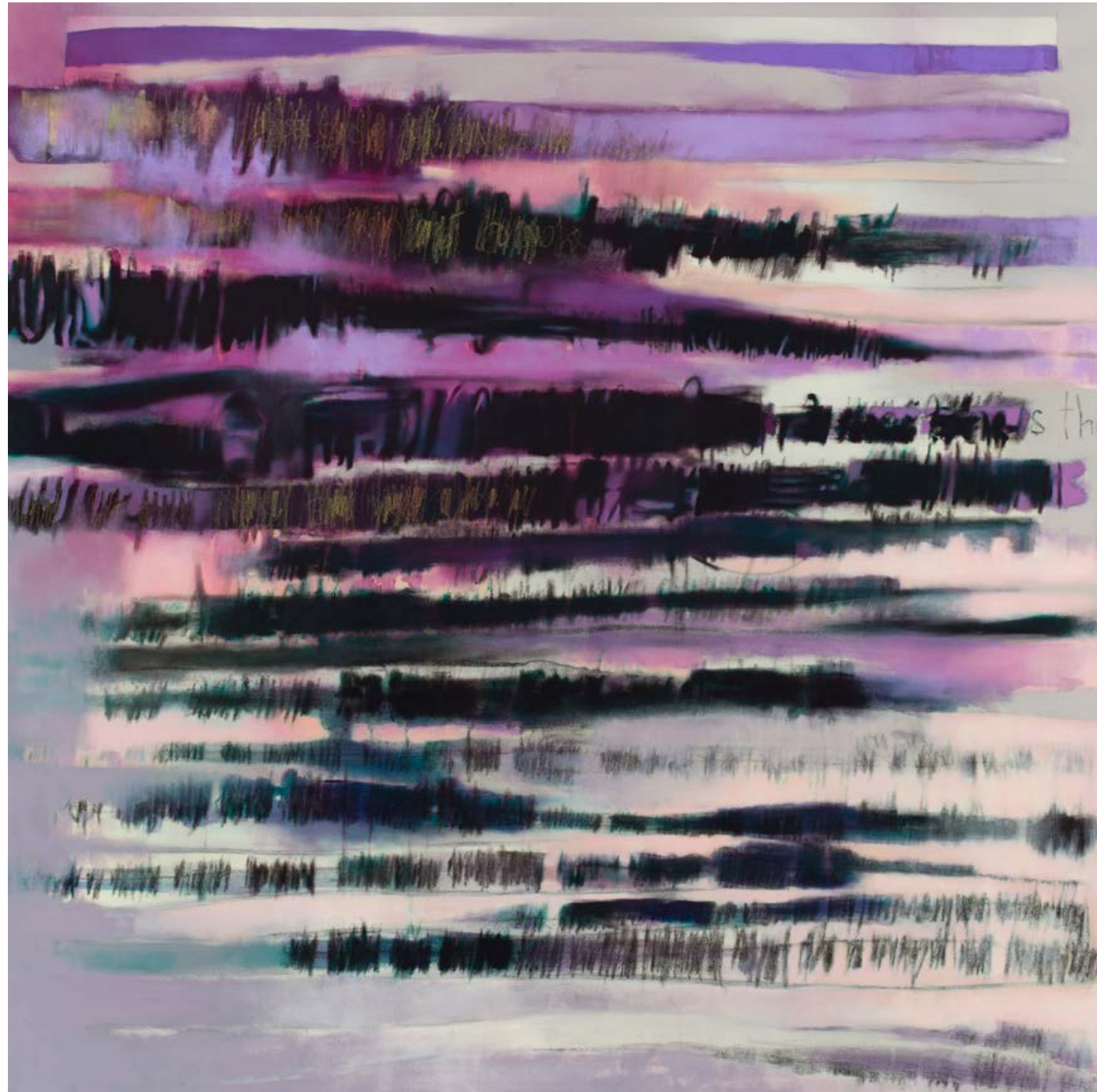
P010 Leopard Heads III

ink on German Hahnemuhle
etching paper edition of 75

42 x 29.7 cm

(16 1/2 x 11 5/8 in)

More works available



NOMTHUNZI MASHALABA

As she is no more (Purple)
mixed media on canvas
150 x 150 cm
(59 x 59 in)



LUCINDA MUDGE

Don't Mess With My Dreams
ceramic and gold lustre
52.5 x 28 cm
(20 5/8 x 11 in)



LUCINDA MUDGE

Bring it Back (after Emilio Pucci)
glazed ceramic, gold lustre
37cm high
(14 1/2 in)

More vases available



NIGEL MULLINS

Crowd

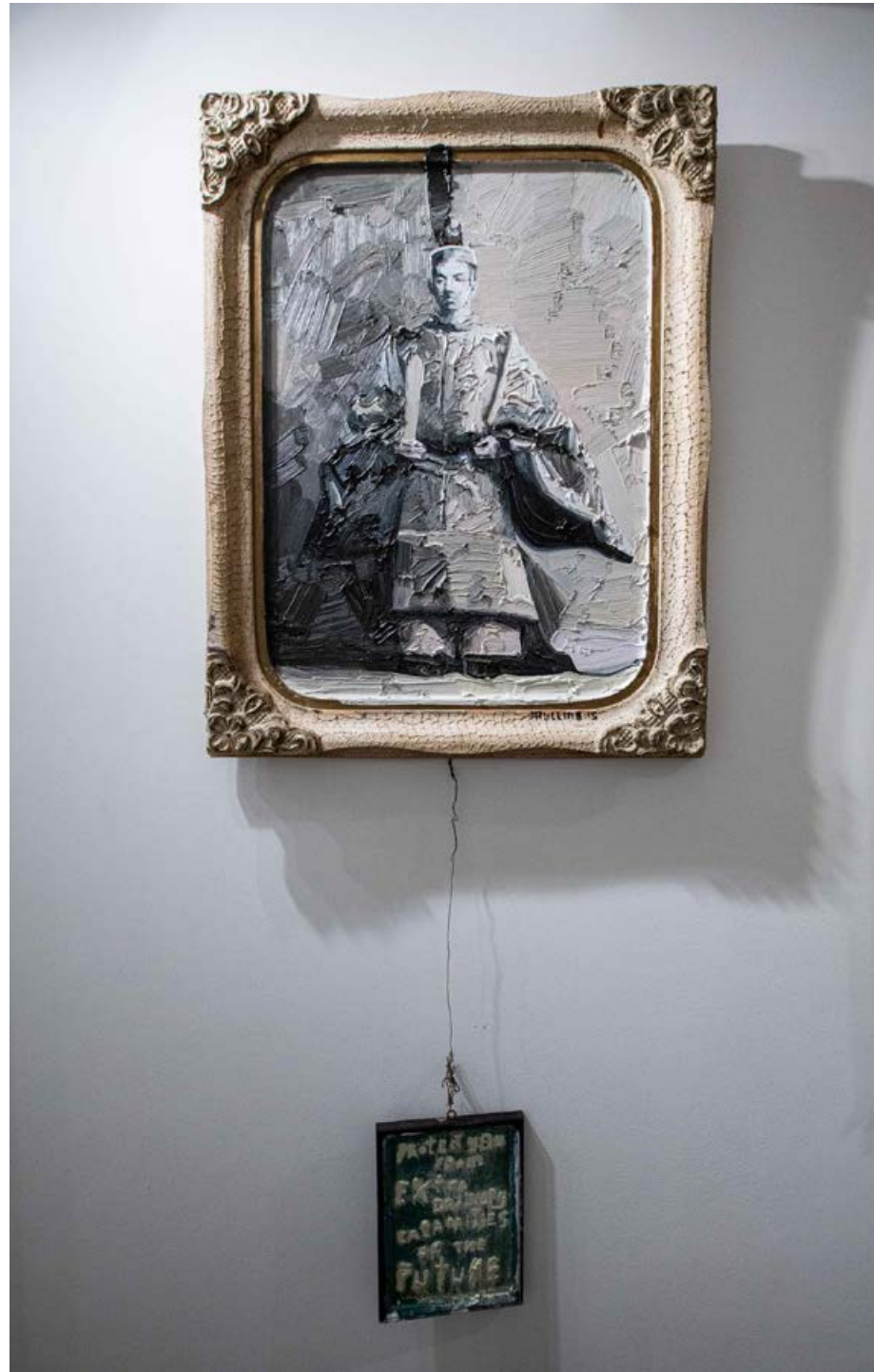
oil on canvas
110 x 140 cm
(43 1/4 x 55 in)



NIGEL MULLINS

*Heroic Prosperity (Homage to
Lorraine and Griff Mullins)*

oil on superwood, wire and
antique frame
75 x 100 cm
(29 1/2 x 39 5/16 in)



NIGEL MULLINS

Protect You from Extraordinary Calamities of the Future
oil on superwood and frame
84 x 45 cm
(33 1/16 x 17 11/16 in)



NIGEL MULLINS

Touch Here to Overcome Anti-Utopian Forces
oil on superwood and frame
53 x 43 cm
(20 3/4 x 16 7/8 in)



NIGEL MULLINS

Bring Back Lost Love (London Olympics 1908)
oil and copper wire on superwood
40 x 38 cm
(15 5/8 x 15 in)



NIGEL MULLINS

LIFE Elephant
oil on superwood and frame
71 x 48 cm
(27 7/8 x 18 7/8 in)



BRETT MURRAY
Fucking Twitter
 bronze edition of 6
 40 x 20 x 28 cm
 (15 5/8 x 7 3/4 x 11 in)



BRETT MURRAY
Premonition
 bronze edition of 6
 40 x 16.5 x 19 cm
 (15 5/8 x 6 3/8 x 7 3/8 in)



BRETT MURRAY
Bide
 bronze edition of 6
 30 x 41 x 45 cm
 (11 3/4 x 16 1/8 x 17 5/8 in)



BRETT MURRAY

Limbo

marble and gold leaf edition of 3

50 x 83 x 3.7 cm

(19 5/8 x 32 5/8 x 1 3/8 in)



BRETT MURRAY

Who?

marble and gold leaf edition of 3

50 x 83 x 3.7 cm

(19 5/8 x 32 5/8 x 1 3/8 in)



DANIEL NAUDÉ

Africanis 3. Strydenburg, 1 April 2008 (Africanis)

C-Print, Lightjet on Fujifilm professional, Dibonded on aluminium edition of 8

74 x 74 cm

(29 1/8 x 29 1/8 in)



DANIEL NAUDÉ

Africanis dog. Murraysburg, South Africa, 7 February 2009

Archival pigment print on hahnemuehle cotton rag 308 gsm

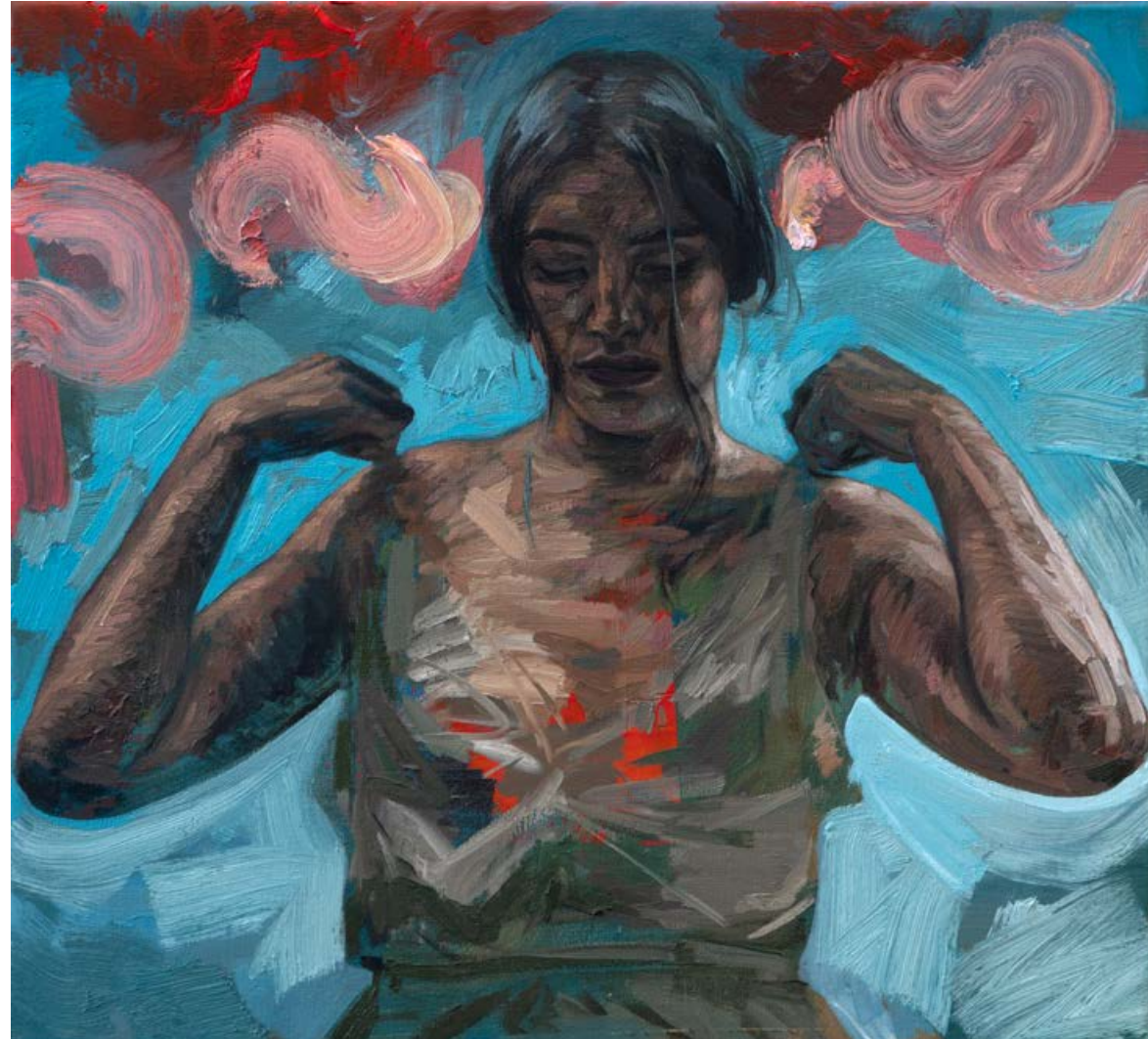
paper edition of 20

24 x 24 cm

(9 3/8 x 9 3/8 in)



WILLIAM PEERS
Achill III
Carrara marble on Tunisian
marble base
44 x 37 x 7 cm
(17 1/4 x 14 1/2 x 2 3/4 in)



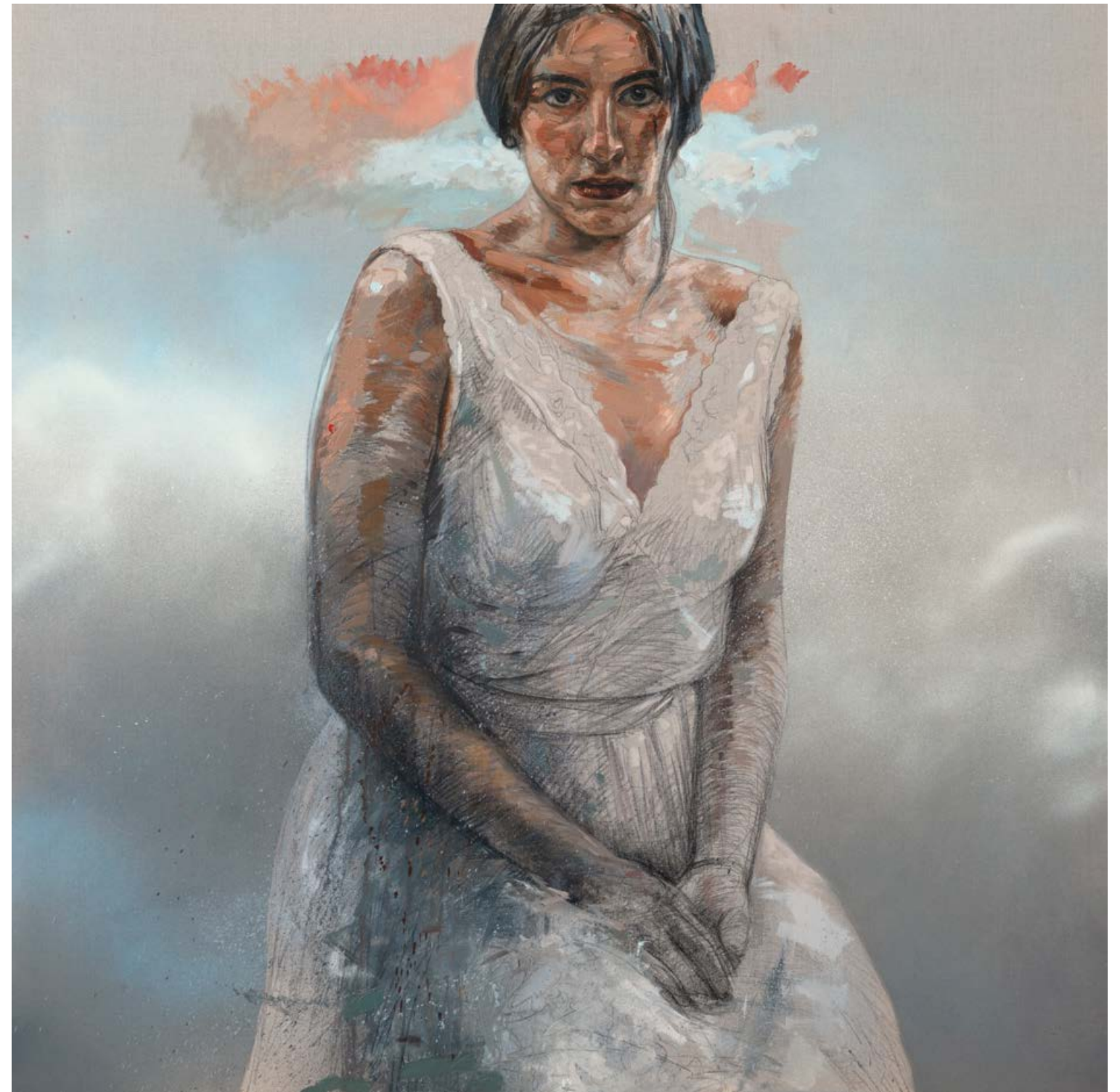
LIONEL SMIT

Probable Light

oil on linen

55 x 60 cm

(21 5/8 x 23 1/2 in)



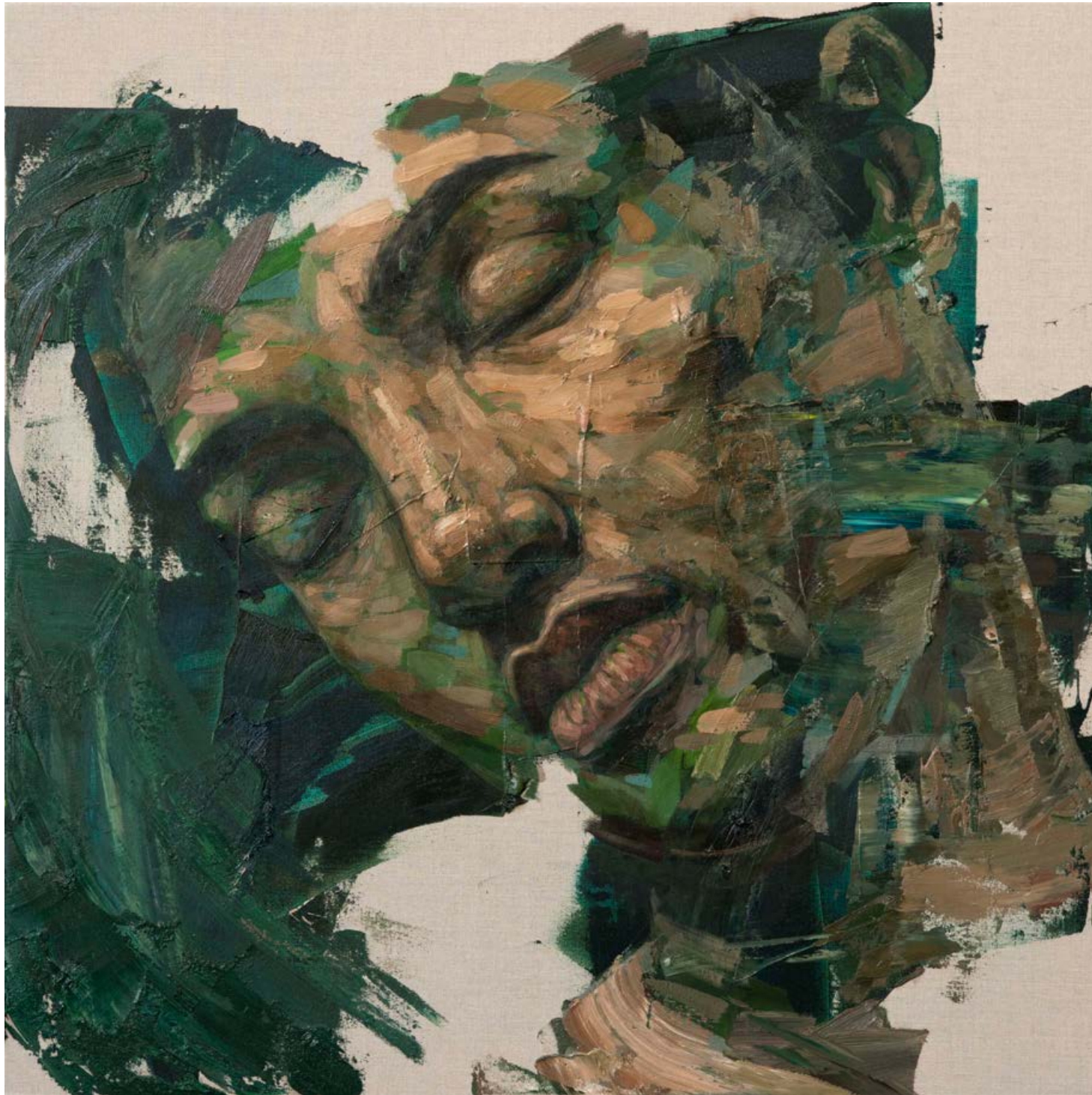
LIONEL SMIT

Interrupted Shape #1

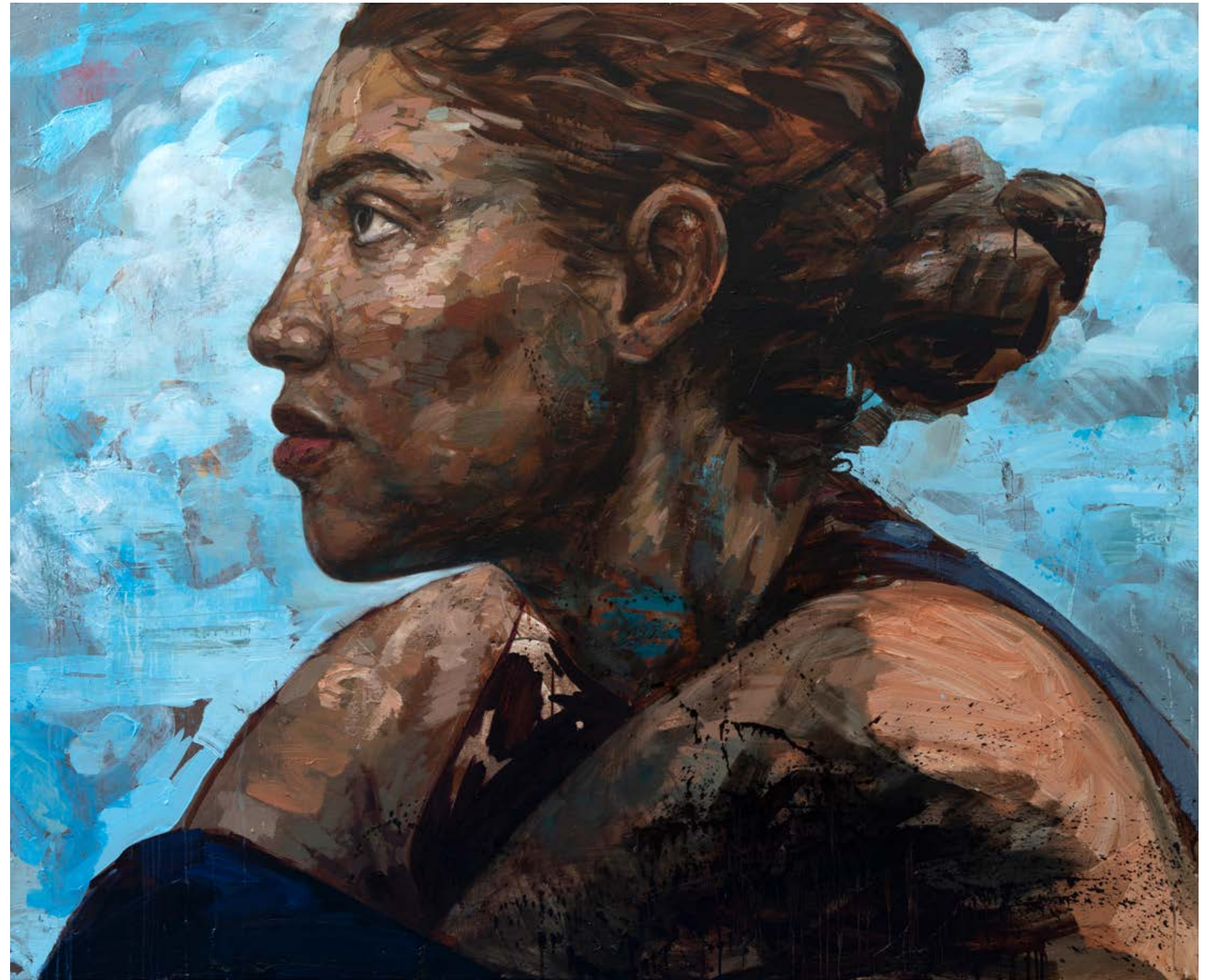
oil, spraypaint and charcoal on linen

150 x 150 cm

(59 x 59 in)



LIONEL SMIT
Intermitted Swath #2
 oil on linen
 100 x 100 cm
 (39 1/4 x 39 1/4 in)



LIONEL SMIT
Expectancy
 oil on linen
 140 x 170 cm
 (55 x 66 7/8 in)



LIONEL SMIT

Surge

bronze edition of 6

135 x 70 x 50 cm

(53 1/8 x 27 1/2 x 19 5/8 in)



LIONEL SMIT

Enswathe

bronze edition of 6

192 x 130 x 100 cm

(75 1/2 x 51 1/8 x 39 1/4 in)



LIONEL SMIT

Medium Malay Girl

bronze edition of 12

96 x 64 x 66 cm

(37 3/4 x 25 3/16 x 25 15/16 in)



RINA STUTZER

In the Praise of the Nomadic: Rhizome

bronze, patina, marble edition of 4

7 x 9 1/4 x 11 3/8 in

(18 x 23.5 x 29 cm)



RINA STUTZER

The Little Messenger

bronze and Patina edition of 12

10.5 x 10.5 x 3.5 cm

(4 1/8 x 4 1/8 x 1 3/8 in)



RINA STUTZER

The Little Collector IV
bronze, iron pyrite crystal (fools gold),
patina crow edition of 15
4 x 6 x 2 cm



RINA STUTZER

The Little Collector V
bronze, iron pyrite crystal (fools gold),
patina crow edition of 15
6 x 4 x 6 cm
(2 1/4 x 1 1/2 x 2 1/4 in)



RINA STUTZER

Stealing the Little Hole in the Sky
cast bronze, copper, patina edition of 12
12.5 x 10 x 10 cm
(4 7/8 x 3 7/8 x 3 7/8 in)



LEFT
SHANY VAN DEN BERG
Lily Portrait IX
 oil on board
 30 x 24 cm
 (11 3/4 x 9 3/8 in)



RIGHT
SHANY VAN DEN BERG
Lily Portrait XIV
 oil on board
 30 x 24 cm
 (11 3/4 x 9 3/8 in)

More lilies available



SHANY VAN DEN BERG
Lily Pond II
 oil on board
 70 x 183 cm
 (27 1/2 x 72 in)



SHANY VAN DEN BERG

A Short Fable

pencil, ink, watercolour and collage on vintage paper

38 x 28 cm

(15 x 11 in)



SHANY VAN DEN BERG

Antheia – Goddess of the Garden

Pencil, charcoal and oil on board

130 x 130 cm

(51 1/8 x 51 1/8 in)



BARBARA WILDENBOER
The Blind Leading The Blind I
handcut rephotographed analogue collage
24 cm



BARBARA WILDENBOER
The Blind Leading The Blind II
handcut rephotographed analogue collage
30 cm diameter



BARBARA WILDENBOER
The Blind Leading The Blind III
handcut rephotographed analogue collage
36 cm diameter



BARBARA WILDENBOER
The Blind Leading The Blind IV
handcut rephotographed analogue collage
36 cm diameter



BARBARA WILDENBOER
The Blind Leading The Blind V
handcut rephotographed analogue collage
42 cm diameter



BARBARA WILDENBOER
The Blind Leading The Blind VI
handcut rephotographed analogue collage
36 cm diameter



BARBARA WILDENBOER
The Blind Leading The Blind VII
handcut rephotographed analogue collage
42 cm diameter



BARBARA WILDENBOER
The Blind Leading The Blind VIII
handcut rephotographed analogue collage
30 cm diameter



BARBARA WILDENBOER
The Blind Leading The Blind IX
handcut rephotographed analogue collage
30 cm diameter



BARBARA WILDENBOER
The Blind Leading The Blind X
handcut rephotographed analogue collage
24 cm diameter



FLORIAN WOZNIAK
Resting Couple
 bronze edition of 8
 32 x 34 x 42 cm
 (12 1/2 x 13 3/8 x 16 1/2 in)



FLORIAN WOZNIAK
Dreamer (medium)
 bronze edition of 8
 36 x 51 x 32.5 cm
 (14 1/8 x 20 x 12 3/4 in)

