



GUY DU TOIT

Hare and Now II



GUY DU TOIT

Hare and Now II

10 May – 7 June 2024

Everard Read London

1 May – 15 September 2024

Chelsea Physic Garden



HARE AND NOW II

Everard Read presents a collection of new bronze sculptures by renowned South African artist, Guy du Toit, at its London gallery and at the nearby Chelsea Physic Garden.

In these simultaneous exhibitions, du Toit's whimsical and playful hares will animate the gallery's exhibition spaces for the month of May and the historic grounds of Chelsea Physic Garden throughout the spring and summer.

The hare is a lively, witty, likely-to-do-the-unpredictable sort of animal. Under du Toit's deft manipulation, it has come to stand as a surrogate for our human existence, as well our relationship with the natural and social world, allowing us to smile both at it and ourselves.

Du Toit's hares move through their world – often on wheels – with a sense of joyful aimlessness, ears blowing in the wind, arms waving in the air. Some have taken a moment to rest, considering their next destination. Whether riding alone on a skateboard, hugging a friend, or sitting together on a bench, these mindful creatures are able to tune into their inner worlds and find peace, satisfaction and joy in what they have.

Fellow artist Wilma Cruise astutely observes, 'Guy du Toit's hares have a lightness of being – they dance, they fly, they sit pondering their thoughts. They are like quick sketches in the landscape, something glimpsed out the corner of the eye, like a flash of truth.'

A photograph of the Chelsea Physic Garden. The scene is dominated by a large, leafy tree on the left. In the center, a gravel path leads towards a statue of a man in historical attire, standing on a stone pedestal. To the right of the path is a stone pillar topped with a large urn. In the background, a brick building is visible through the trees. The overall atmosphere is peaceful and well-maintained.

Chelsea Physic Garden

1 May – 15 September 2024



*Embracing Couple
(Whisperers)*
bronze
edition of 16
194 x 110 x 65 cm

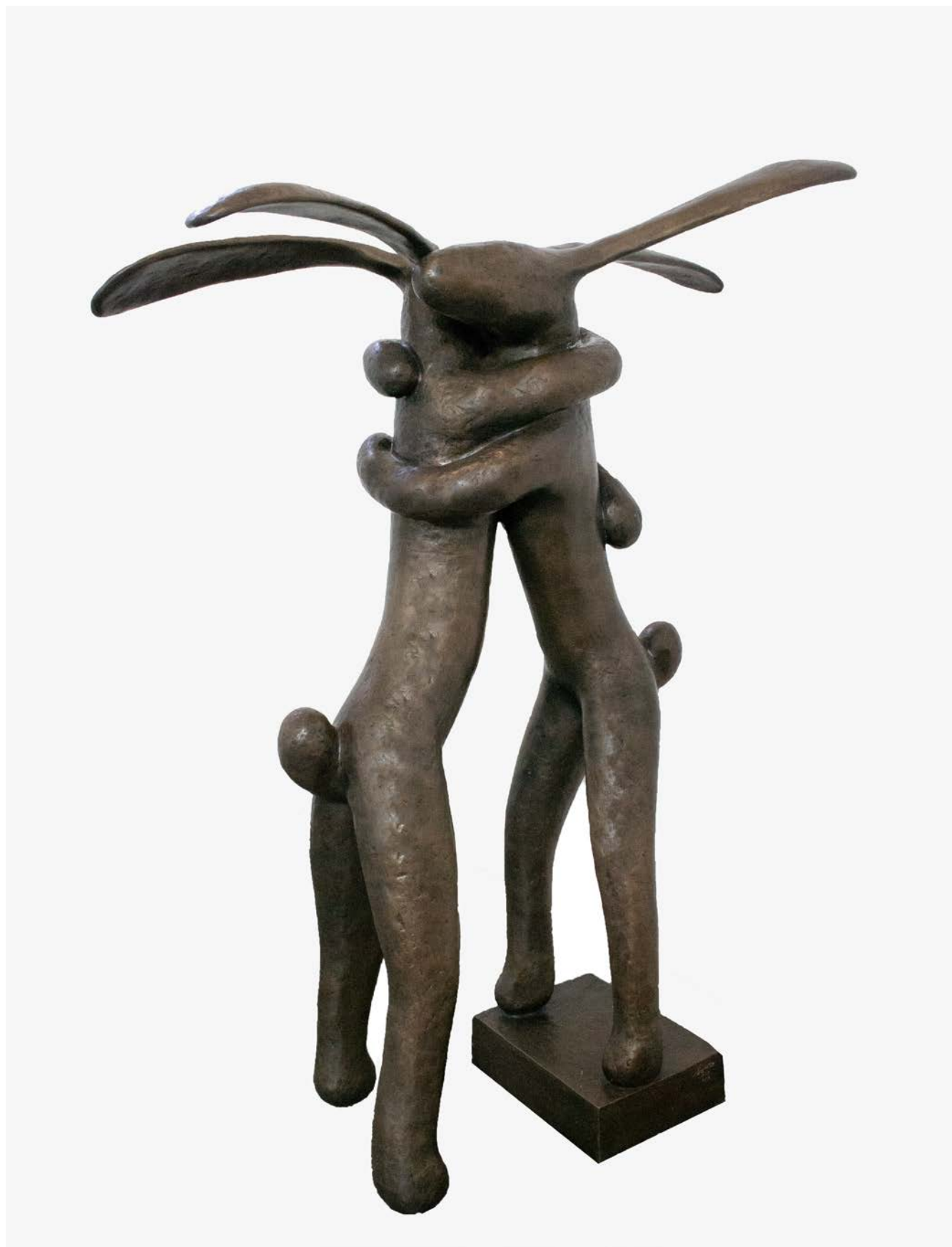


On A Roll VII
bronze
edition of 16
patina variable
190 x 90 x 50 cm



Tango (medium)
bronze
edition of 16
204 x 80 x 100 cm





Huggers
bronze
edition of 16
177 x 127 x 64 cm



Big Thinker
bronze
edition of 16
178 x 79.5 x 109 cm



Water Hare
bronze
edition of 16
80 x 120 x 70 cm



10 May – 7 June 2024

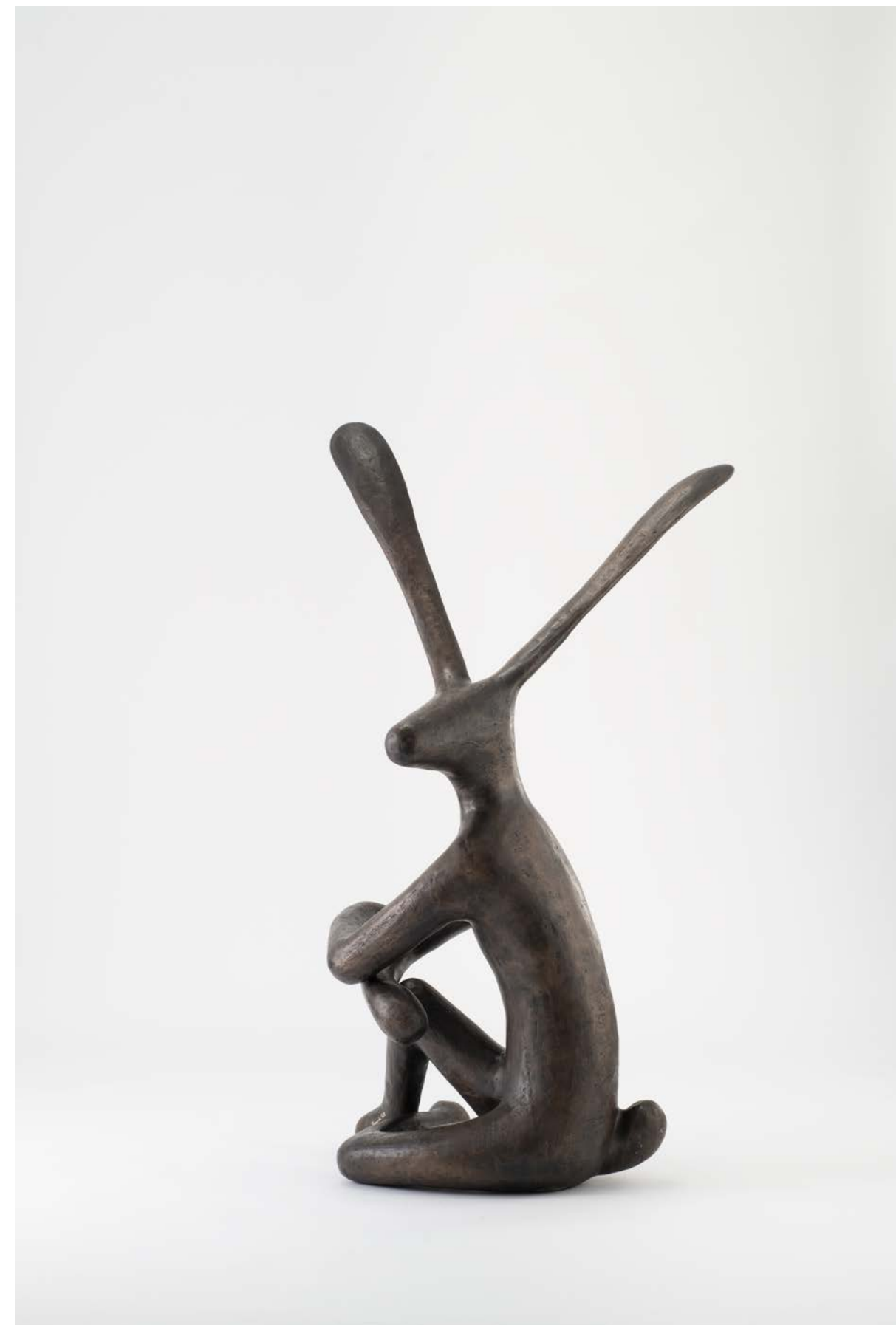


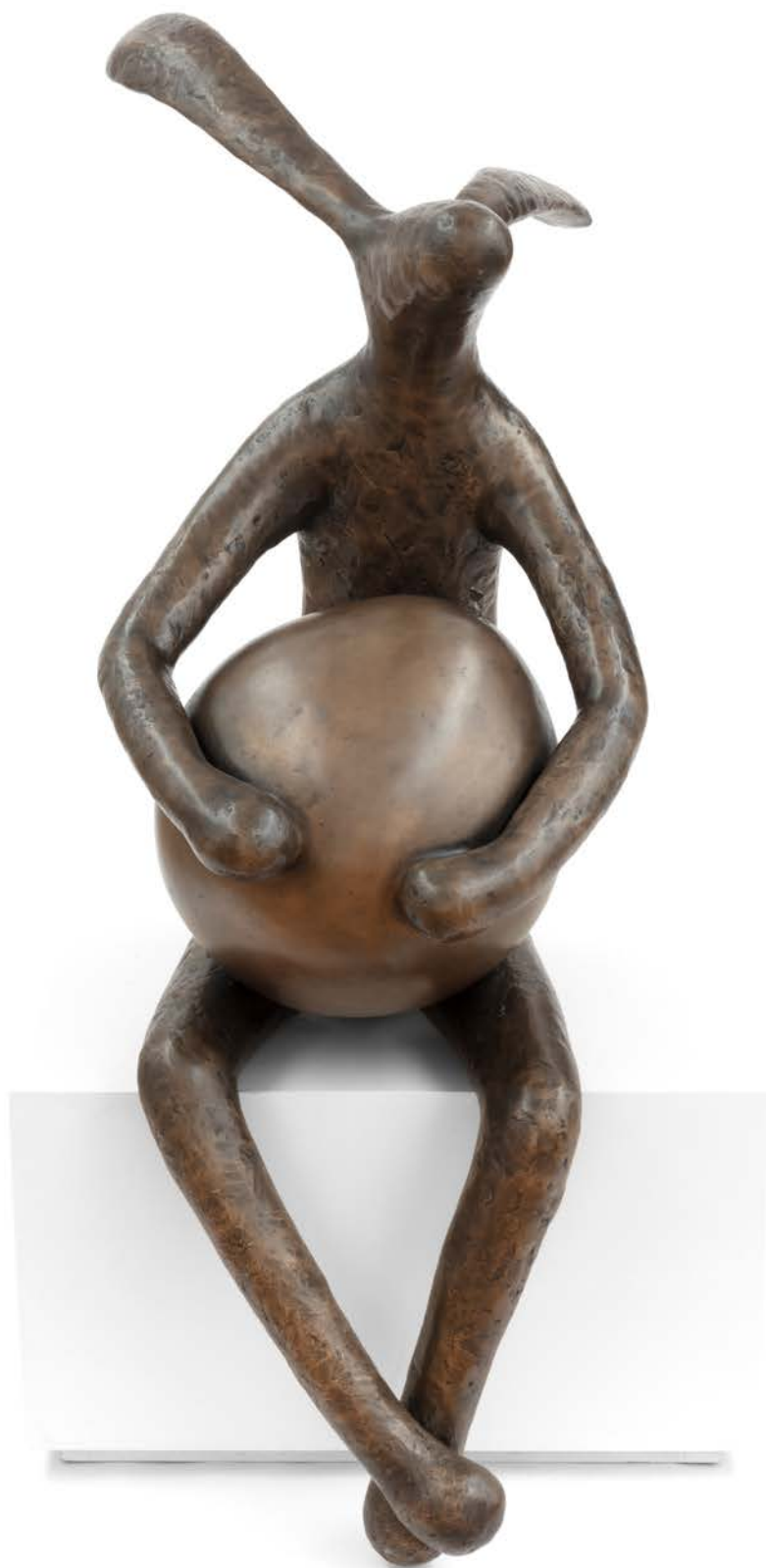
Couple on a Bench
bronze
edition of 16
133 x 136 x 130 cm

Work From Home (medium)
 bronze
 edition of 16
 117 x 40.5 x 72.5 cm



Folded Arms on Knee
 bronze
 edition of 16
 151 x 67 x 85 cm





Hare With Balloon II
bronze
unique
156 x 44 x 83 cm



Hare with Binoculars II
bronze
unique
134 x 37 x 61 cm

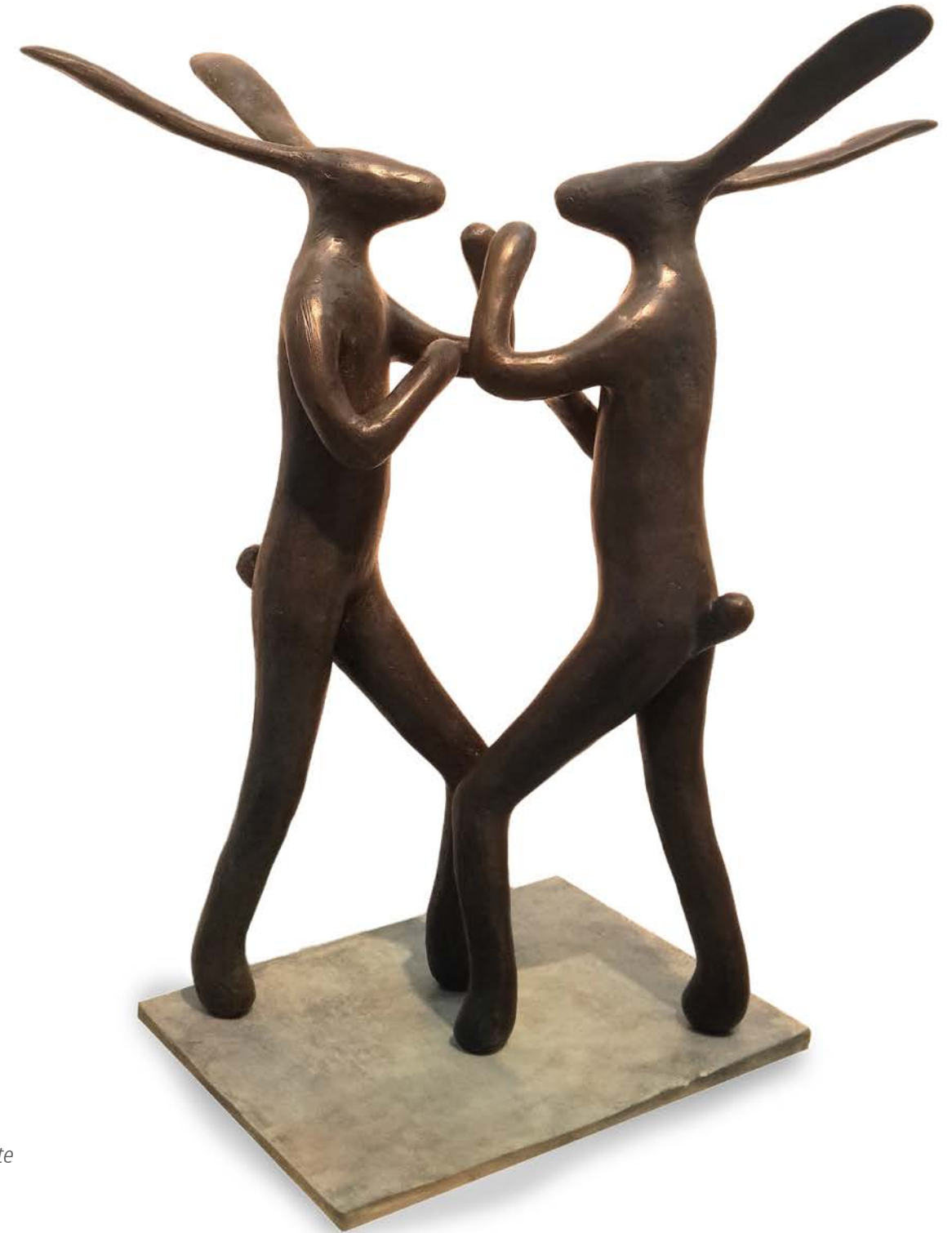


Hare Reading
bronze
edition of 16
161 x 61 x 83 cm





Hare on a Cone II
bronze
unique
67 x 33 x 33 cm



Boxing Hares Maquette
bronze
edition of 16
63 x 50 x 21 cm



Contemplating
bronze
unique
22.5 x 9 x 11 cm



Leap Frog Hares
bronze
edition of 16
59 x 28 x 28 cm



Arms Folded Legs Square
bronze
edition of 16
51.5 x 17 x 25 cm



Party Hare on Chair Maquette
bronze
unique
32 x 14 x 14 cm



See no evil, Hear no evil, Say no evil
(Three thinkers)

bronze

unique

24 x 25 x 11 cm



Hares (M)
bronze
edition of 16
25.5 x 20.5 x 9 cm



Hugging Hares
bronze
edition of 16
24 x 21 x 8.5 cm



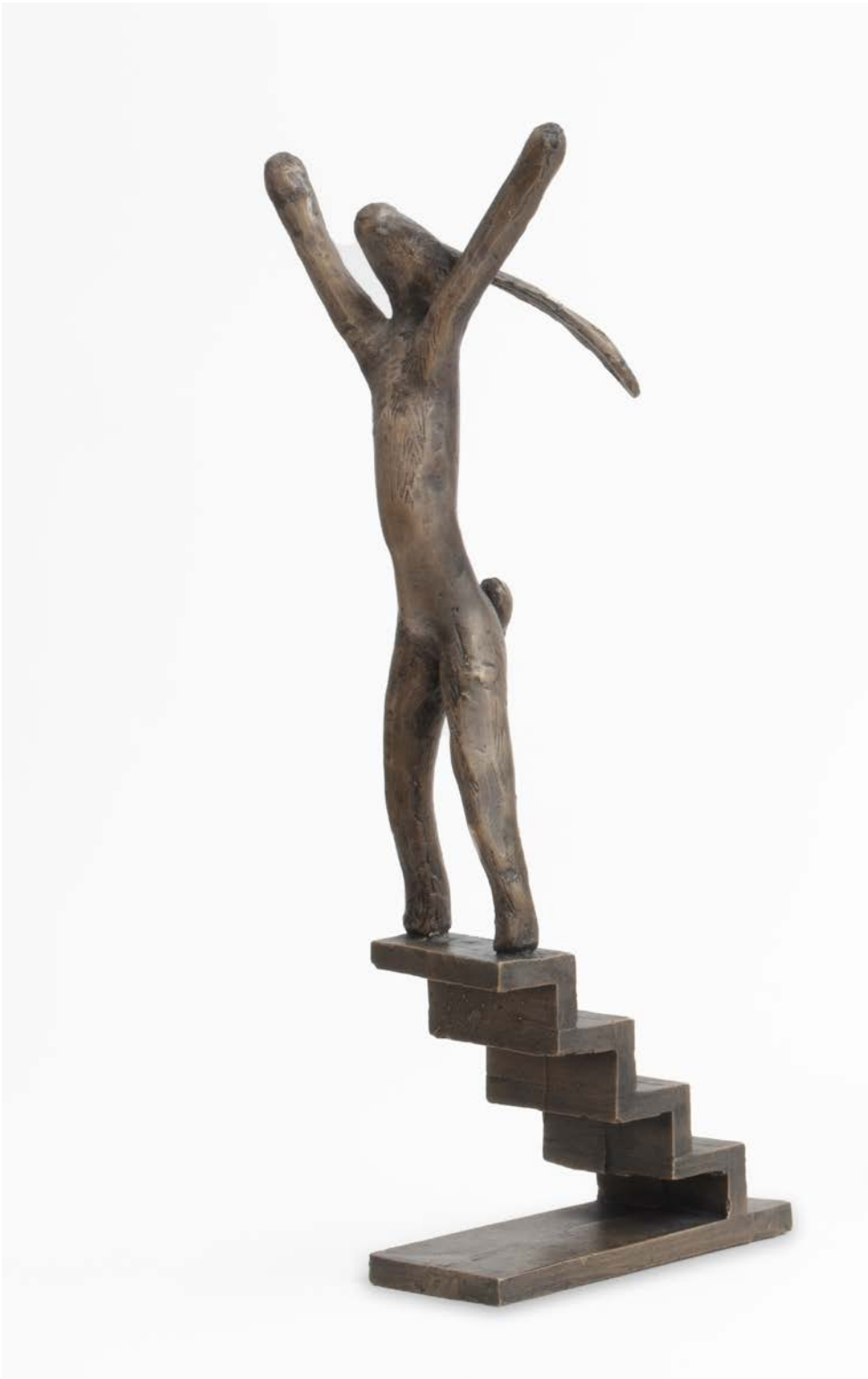
Dancers
bronze
edition of 16
24 x 28 x 9 cm



Stairs Crossing
bronze
unique
26 x 6.5 x 25.5 cm



Showman Hare to Crowd
bronze
unique
34.5 x 13.5 x 22.5 cm



Showman Hare to the Stars
bronze
unique
34 x 10.5 x 13 cm



Showman Hare on Stairs
bronze
unique
35.5 x 11 x 13 cm





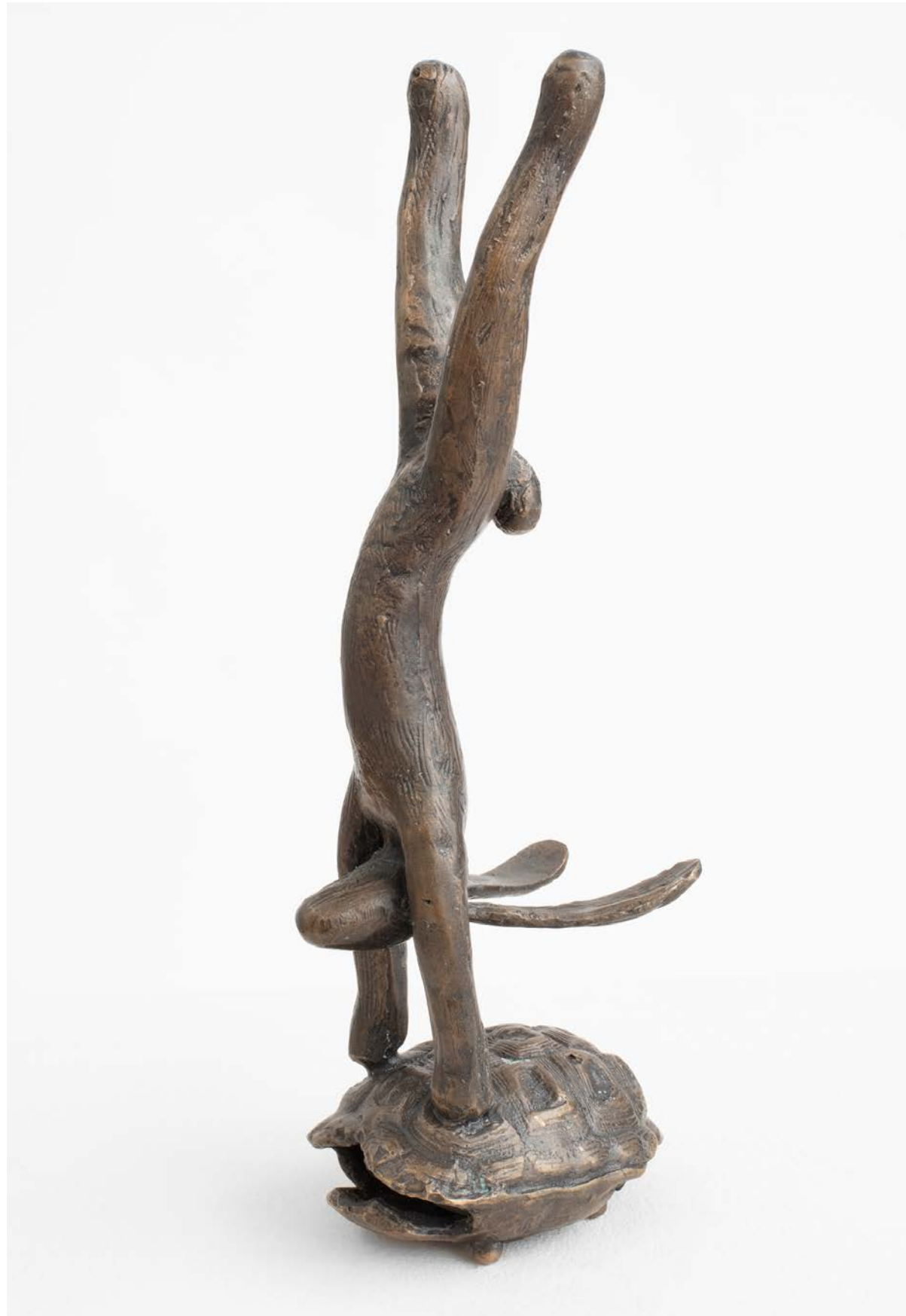
Gazing Hare on Stool II
bronze
unique
18 x 16 x 8.5 cm



Figure Four
bronze
unique
20 x 13 x 8.5 cm



Day Dreaming
bronze
unique
11.3 x 8.5 x 12.4 cm



Hare Cartwheel Tortoise
bronze
unique
29 x 7 x 9.5 cm



Hare Dive off Tortoise
bronze
unique
22.3 x 15.4 x 17.9 cm



Stretching Hare
bronze
unique
13 x 25 x 8 cm



Lounging on Tortoise
bronze
unique
9.5 x 9.3 x 24.7 cm



Wild Story
bronze
unique
21 x 16.5 x 10.9 cm

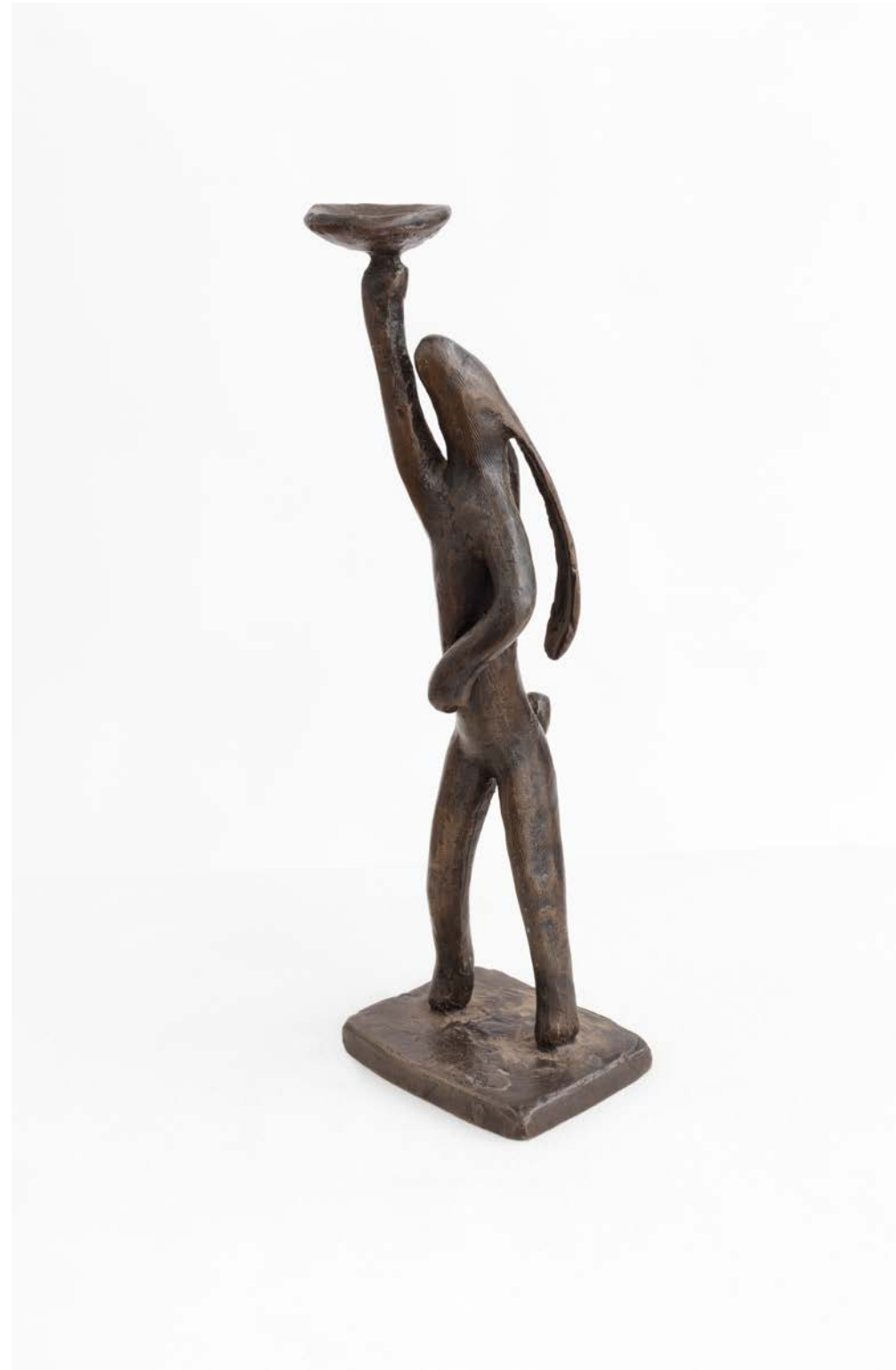


Hare Leap Frog Tortoise
bronze
unique
16 x 9.3 x 12 cm

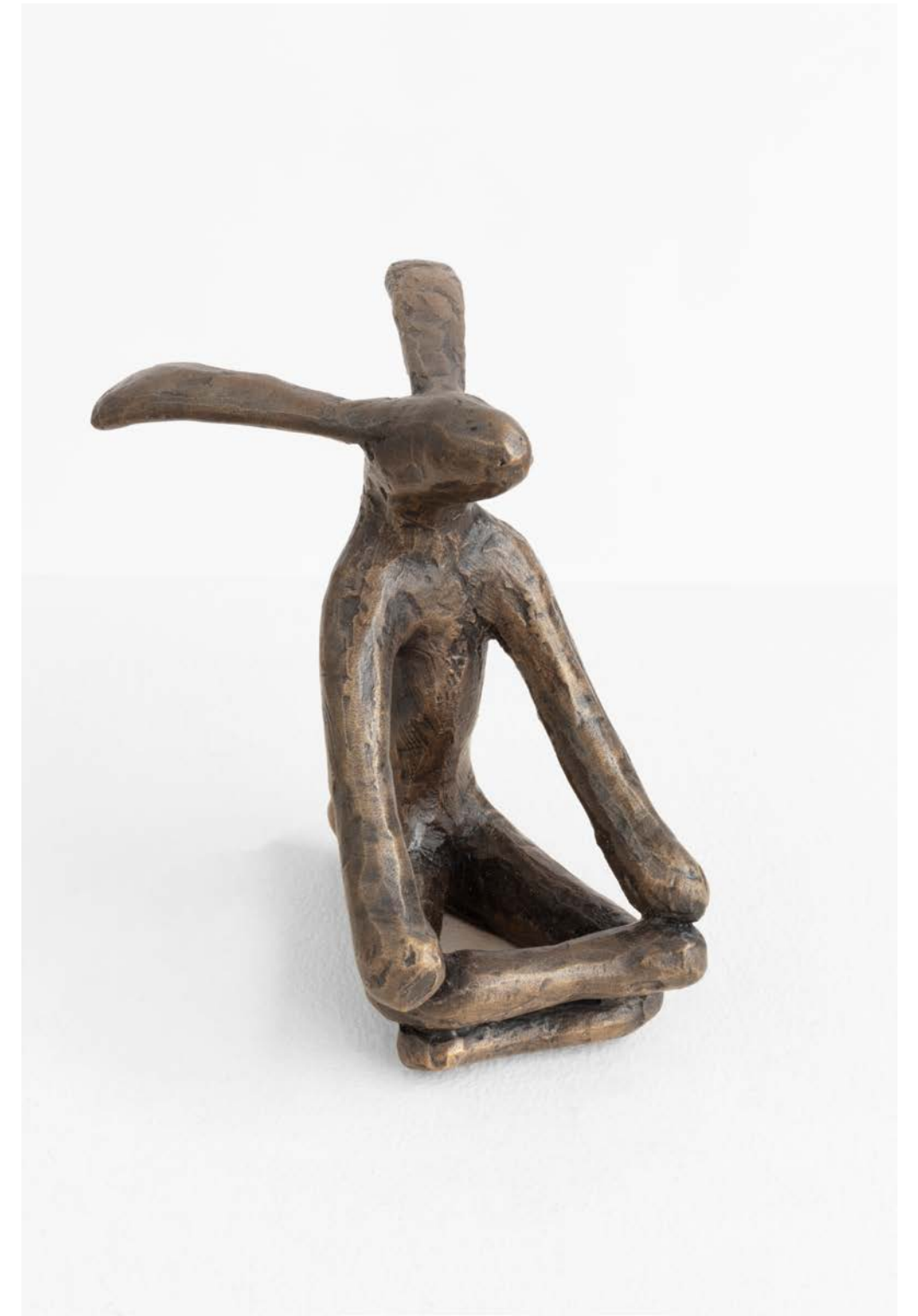




Crossed Arms
bronze
unique
22.6 x 10 x 8 cm



Offering
bronze
unique
27.7 x 9 x 8 cm



Meditating
bronze
unique
11.5 x 8.5 x 12.4 cm



GUY DU TOIT

b.1958, Rustenburg, South Africa

Guy Du Toit's apparent irreverence can obfuscate the fact that he is one of South Africa's most accomplished sculptors. With the advent of democracy in South Africa, du Toit shifted his attention from notions of identity to pursuits such as revelling in form, concept and media for their own sake.

Du Toit uses the unexpected juxtaposition of bronze casts of universal, everyday found (and made-to-look-found) objects to invite his audience to invent their own narrative. The artist's hares have resonated with audiences universally as he explores form through playful bronze renderings of hares who sit and ponder their thoughts, play leapfrog, dance or ride a skateboard - each with a unique character and endearing quality.

Du Toit graduated from the University of Pretoria with a BA (Fine Art) Degree and a distinction in sculpture. He uses a wide range of media including bronze, stone, wood and steel, and draws in pen, ink and charcoal. He has exhibited extensively, both in his native South Africa and internationally, and has been consistently supported by private and public collectors, institutions, academics and fellow artists.

Honoured with several awards, du Toit curates and adjudicates exhibitions and lectures at several institutions, including Pelmama Academy in Soweto, Pretoria University, Johannesburg and Pretoria Technikon, and the Johannesburg School of Art, Ballet, Drama and Music. He gives workshops throughout South Africa and has been involved in community projects, seminars and symposia.



SELECTED EXHIBITIONS

- 2023** *Hare and Now*, Everard Read Franschhoek, South Africa
- 2022** *Summer Exhibition 2022*, Everard Read, London, UK
Winter 2022|23, Everard Read, London, UK
Summer Sculpture Exhibition, Riverhill Gardens, Everard Read, London, UK
Things I'd Like To Remember: A Group Exhibition, Everard Read, Cape Town, South Africa
Spring | A Group Show, Everard Read, Johannesburg, South Africa
Summer | A Group Show, Everard Read, Johannesburg, South Africa
- 2021** *On a Roll*, Everard Read, Cape Town, South Africa
Solo, Everard Read, Cape Town, South Africa
Summer 2021, Everard Read, London, UK
Winter 2021|22, Everard Read, London, UK
Offering, Everard Read, Johannesburg, South Africa
- 2020** *Winter 2020*, Everard Read, London, UK
And all the hares came out to play, Everard Read Gallery, Johannesburg
Bronze, Steel, Stone & Bone, group exhibition, Everard Read, London, UK
Staring Straight to the Future, Everard Read, London, UK
Odyssey, Everard Read, Cape Town, South Africa
Still, Everard Read, Cape Town, South Africa
IMAGO, Everard Read, Johannesburg, South Africa
A Celebration of Fine Sculpture, Everard Read, Johannesburg, South Africa
- 2019** *SUMMER*, Everard Read, London, UK
Winter 2019, Everard Read, Cape Town, South Africa
- 2018** *Good Hare Day*, Everard Read Gallery, London, UK
Summer 2018, Everard Read, Cape Town, South Africa
- 2017** *Summer Exhibition*, Everard Read Gallery, London, UK
Bronze, Steel and Stone, Everard Read Gallery, London, UK
- 2016** *Solo exhibition*, Everard Read Gallery, Johannesburg, South Africa
Bronze, Steel and Stone, Everard Read Gallery, London, UK
- 2014** *Sculpture Summer III*, Mount Nelson Hotel, with Everard Read, Cape Town, South Africa
- Southern Guild and Design, Basel Miami, USA
The Orchard Walk, Tokara Wine Estate sculpture garden, South Africa
- 2013** *Possessed*, Everard Read, Cape Town, South Africa
After the Rainbow Nation, Nirox Sculpture Park, Gauteng, South Africa
- 2012** *Small Works*, group show at Everard Read, Cape Town, South Africa
Solo show, Tokara, Cape Town, South Africa
- 2011** *The Length of a Piece of String*, Everard Read Gallery, Cape Town, South Africa
Surplus to requirements, Slade School of Fine Art, South Africa
Alchemy, Upstairs @ Bamboo, Johannesburg, South Africa
History, Fried Contemporary, Pretoria, South Africa
- 2010** *View from the South*, Everard Read Gallery, Cape Town, South Africa
Twenty, Nirox Sculpture Park, Gauteng, South Africa
Two Thousand and Ten Reasons to Live in a Small Town, group show, VANSa
- 2009** *Sex, Power, Money*, Everard Read Gallery, Cape Town, South Africa
3, with Wilma Cruise & Gordon Froud, Naude Modern, Pretoria, South Africa
- 2007** *Little Deaths*, Fried Contemporary, Pretoria, South Africa
Figures in a Landscape, Gallery at Grande Provence, Franschhoek, South Africa
- 2004** *Three person exhibition* (with Johan Moolman and Ivan du Toit), Gordart, Johannesburg, South Africa
Two person exhibition (with Judith Mason), South African Arts Association, Pretoria, South Africa
- 2003** *Earthworks/Claybodies* (with Deborah Bell, Wilma Cruise, Josephine Ghesa), Pretoria Art Museum, Pretoria, South Africa
- 2001** *Observations*, The Open Window, Pretoria, South Africa
- 2000** *Strata*. An exhibition with Egon Tania, Bamboo, Johannesburg, South Africa
- 1999** *Objects of Desire*, The Open Window Contemporary Art Gallery, Pretoria, South Africa
Conversation, The Open Window Contemporary Art Gallery, Pretoria, South Africa
- 1988** Klein Karoo National Art Festival, Oudtshoorn, South Africa

- Prestige Exhibition*, The Association of the Friends of the Pretoria Art Museum, South Africa
- 1996** *Opening Exhibition*, Open Window Art Academy, Pretoria, South Africa
- 1995** *Images of Metal*, South African Touring Exhibition, South Africa
Space/(Dis)place, Africus Biennial, Electric Workshop, Johannesburg, South Africa
- 1994** *Contemporary Art from South Africa*, Deutsche Aerospace, Munich, Germany
Art Alive 94, Ruddell Theatre, Pretoria, South Africa
Moving Experiences, Everard Read Gallery, Johannesburg, South Africa (also toured Holland and Germany)
Kempton Park/Tembisa Annual Art Competition (Third Prize)
- 1993** *FNB Vita Art Now*, Johannesburg (Overall Winner)
Natural History Museum, Taipei, Republic of China
- 1990** Volkskas Atelier Competition (Merit Award)
Sol Plaatjie Sculpture Award Exhibition Mafikeng, South Africa
- 1989** Images of Wood, Johannesburg Art Gallery, South Africa

AWARDS

- 1994** Kempton Park/Tembisa Annual Art Competition, Third Prize
- 1993** FNB Vita Art Now, Overall Winner
- 1990** Volkskas Atelier, Merit Award
- 1989** Sol Plaatjie Sculpture Award, Sculpture Award
- 1988** Volkskas Atelier, Merit Award
International Exhibition of Miniature Art, del Bello Gallery, Toronto, Honorary Mention
- 1987** Style Lighting Design Award, Lighting Award
Hans Merensky Foundation Wood Sculpture Competition, Merit Award
Corona del Mar Young Artist Award, Sculpture Award
- 1986** Vita Art Now.
- 1985** Hans Merensky Foundation Wood Sculpture Competition, Joint winner with Koos den Houten
Johannesburg Art Museum Centenary Sculpture Competition, Finalist
- 1983** Emil Schweikerdt Bursary for a study tour of Europe
- 1982** New Signatures, Sculpture Prize
Honorary Mention National Fine Arts Students Exhibition, University of the Witwatersrand

PUBLIC AND CORPORATE COLLECTIONS

- Durban Art Gallery
Namibia Art Museum
Iziko South African Museum
Pel mama Permanent Art Collection
Polokwane Art Museum
Port Elizabeth Art Gallery
Pretoria Art Museum
Durban Technicon
Pretoria Technicon
Pretoria Boys High School
St. Mary’s Girls School, Johannesburg
UNISA
University of the Free State
University of the Witwatersrand
University of KwaZulu-Natal
University of Pretoria
ABSA
Alexander Forbes
Council for Scientific and Industrial Research
Foundation for the Creative Arts
Gauteng Provincial Administrator
Gencor/Billiton
Human Sciences Research Council
Mercedes Benz
Nampower
SABC
SANDF
Sasol Art Collection
Velocity Films
Virgin Airlines
Wits Business School
Wooltru
Gauteng Provincial Administration
Women’s Monument, Union Building



Established in 1913 | Modern and contemporary art from South Africa

Everard Read London | 80 Fulham Road | Chelsea, London SW3 6HR
+44 (0)20 7590 9991 | info@everardlondon.com | www.everardlondon.com

Opening hours: Monday to Thursday 10 am – 6 pm
Friday 10 am – 5 pm | Saturdays 12 pm – 4 pm



Chelsea Physic Garden | 66 Royal Hospital Rd | London | SW3 4HS
Tickets can be purchased online [here](#)

Opening hours: 11am – 5pm daily. Closed on Saturdays.

Located on the Thames Embankment, and sheltered by high walls, the four-acre Chelsea Physic Garden is the oldest in London, founded in 1673 by The Worshipful Society of Apothecaries.

www.chelseaphysicgarden.co.uk | +44 (0) 20 7352 5646

PHOTOGRAPHY CREDITS
Michael Hall and Liz Whitter