



EVERARD READ | LONDON

DYLAN LEWIS

New Leopard Maquettes

24 October – 6 November 2025



JOHANNESBURG | CAPE TOWN | LONDON | FRANSCHHOEK



DYLAN LEWIS | *New Leopard Maquettes*

24 October – 6 November 2025

Dylan Lewis is one of South Africa's most acclaimed contemporary sculptors, internationally recognised for his powerful portrayals of wild animals, particularly big cats. Over the past several decades, Lewis has established himself as a master at capturing the primal essence and muscular energy of Africa's predators.

While his oeuvre spans both animalia as well as human figures, Lewis's cat sculptures represent the cornerstone of his artistic identity. For the artist, large cats are archetypal symbols of wilderness and these new bronze maquettes reveal his extraordinary ability to convey both the physical might and spiritual essence of these apex predators. Lewis's cats are not only anatomically precise representations, they are also emotionally charged vessels that explore themes of wilderness, predation, and transformation.

Lewis's sculptures emerge from his deep knowledge of these animals, gained through extensive observation in the wild, anatomical studies and sketching and drawing. His technical mastery allows him to capture the tension in a leopard's haunches before a leap, or the focused intensity of its gaze.

Lewis has long been inspired by the words of British sculptor, Henry Moore: *'The secret of life is to have a task, something you devote your entire life to, something you bring everything to, every minute of the day for the rest of your life. And the most important thing is, it must be something you cannot possibly do.'* Through his sculptures, Lewis has not only shaped his artistic voice but also contributed significantly to contemporary wildlife sculpture, creating a body of work that speaks to both primal instincts and refined aesthetic sensibilities. This exhibition will remind collectors that Dylan Lewis is one of the most profound animaliers of his time.



S489 Walking Leopard VI Maquette

Edition of 12

bronze

73 x 85 x 22 cm

28 5/8 x 33 3/8 x 8 5/8 in







S490 Leopard Chasing Impala Maquette

Edition of 12

bronze

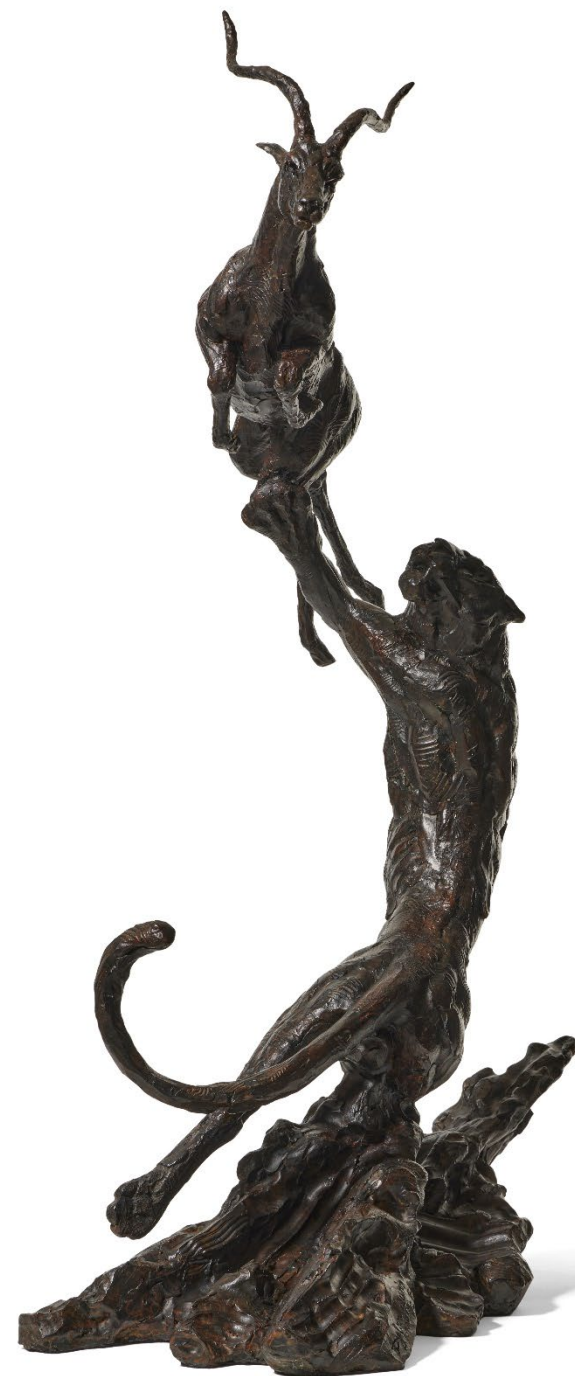
140 x 90 x 60 cm

55 x 35 3/8 x 23 1/2 in

EVERARD READ | LONDON



80 Fulham Road | London | SW3 6HR
T +44 (0) 20 7590 9991 | info@everardlondon.com | www.everardlondon.com









S491 Leopard on Branch Maquette

Edition of 12

bronze

61 x 68 x 72 cm

24 x 26 3/4 x 28 1/4 in









S494 Walking Leopard VII Maquette

Edition of 12

bronze

43 x 90 x 21 cm

16 7/8 x 35 3/8 x 8 1/4 in









S492 Sleeping Leopard Maquette II
Edition of 12
bronze
66 x 82 x 46 cm
26 x 32 1/4 x 18 in

EVERARD READ | LONDON



80 Fulham Road | London | SW3 6HR
T +44 (0) 20 7590 9991 | info@everardlondon.com | www.everardlondon.com







S495 Sitting Leopard Maquette IV

Edition of 12

bronze

57 x 78.5 x 61 cm

22 3/8 x 30 7/8 x 24 in







EVERARD READ | LONDON

Established in 1913 | Modern and contemporary art from South Africa

Everard Read London | 80 Fulham Road | Chelsea, London SW3 6HR

+44 (0)20 7590 9991 | info@everardlondon.com | www.everardlondon.com

Opening hours: Monday to Thursday 10am – 6pm | Friday 10am – 5pm

Saturday 12pm – 4pm



JOHANNESBURG | CAPE TOWN | LONDON | FRANSCHHOEK