

WINTER EXHIBITION

18 December 2025 – 17 January 2026

ER | 10 YEARS



Everard Read London is proud to present a group exhibition primarily by South African artists, with diverse backgrounds, who have an authentic and considered practice and who share a commitment to contemporary story-telling and craft.

Whether meditating on everyday aspects of being human, or the big philosophical ideas of our time, Everard Read supports its artists in creating contemporary icons that help to discern meaning in the world, as well as encourage reflection, contemplation, wonder, awe – and humour.

CATHY ABRAHAM | SANELL AGGENBACH | BEEZY BAILEY
NIC BLADEN | BOYTCHIE | TOM CULLBERG | GUY DU TOIT
RICKY DYALOYI | LUCA EVANS | LEE-ANN HEATH
JEANNE HOFFMAN | CLAUDE JAMMET | THONTON KABEYA
NOMTHUNZI MASHALABA | JOHN MEYER | LUCINDA MUDGE
NIGEL MULLINS | BRETT MURRAY | OLIVIA MUSGRAVE
TANYA POOLE | MARK RAUTENBACH | CARYN SCRIMGEOUR
BRETT CHARLES SEILER | ANGUS TAYLOR | PHILIPPE UZAC
SHANY VAN DEN BERG



ABOVE

BRETT CHARLES SEILER

Diver II

bitumen and roof paint on canvas
130 x 119.5 cm



LEFT

MARK RAUTENBACH

8: 31: 03 (Zazen Suite, Ad Hominem Series)

mixed media
128 x 88.5 cm



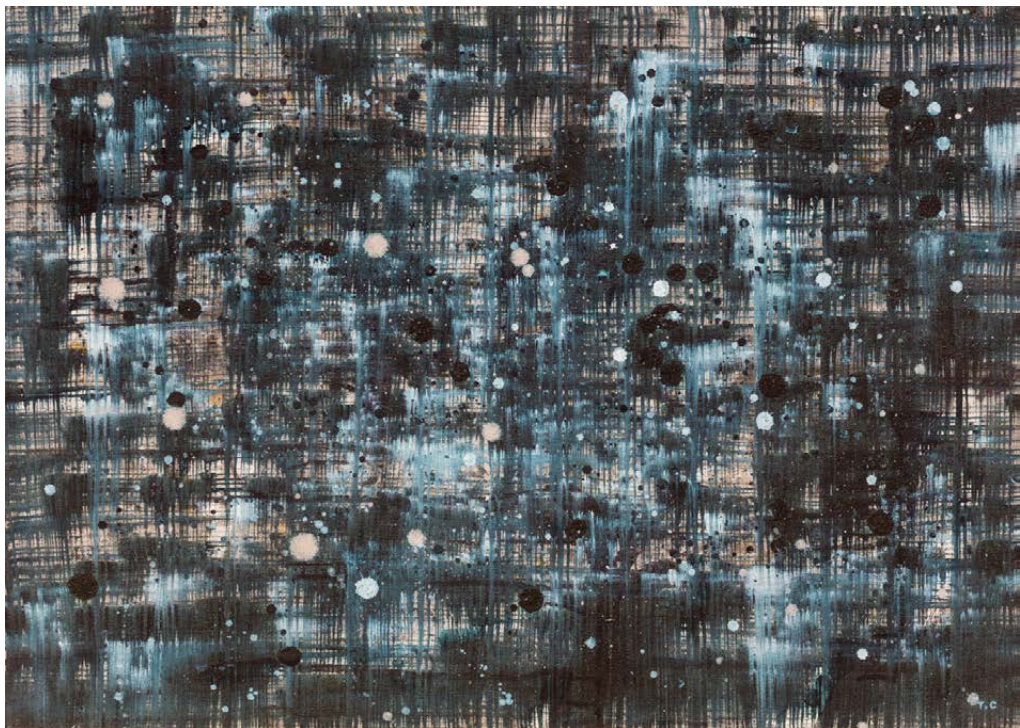


ABOVE
CATHY ABRAHAM

Indigo eighteen strokes II
oil on Italian cotton canvas
54 x 44 cm

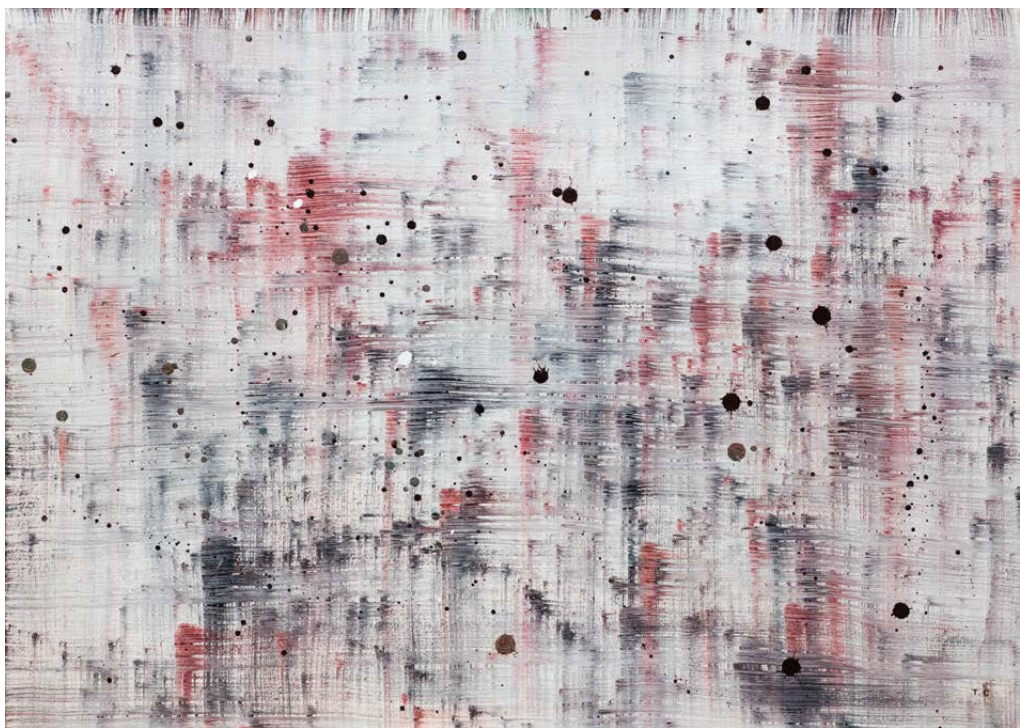
LEFT
LUCA EVANS

*Man on train sneezes, whispers
'bless me'*
cotton rag canvas and house paint
43.5 x 34.5 cm



TOP
TOM CULLBERG

Abstract 16
oil on canvas
50 x 70 cm



ABOVE
TOM CULLBERG

Abstract 15
oil on canvas
50 x 70 cm



JOHN MEYER

Patagonia, Hanging Glacier

mixed media on canvas

160 x 230 cm

Patagonia, Hanging Glacier, is a departure from the artist's homeland, the result of a broader desire to document some of the most awe-inspiring places across the globe. In total, Meyer painted eighteen monumental canvases, to form *The Planet Earth Collection*, between 2020–2022.

'For most of my Planet Earth series, the hand of humanity and its potential destructive influence is hidden ... in these paintings, I have a mission, and that is to awaken a joy in our environment that will open people's eyes to the beauty of what we have, and do what is possible to preserve it.'





BRETT CHARLES SEILER

There were flowers being held here

bitumen and roof paint on canvas, 130 x 167 cm



SHANY VAN DEN BERG

Dream Garden

oil on linen, 90 x 130 cm

ANGUS TAYLOR

*She as the Poet, and the poet
as the Witness (maquette)*

bronze, marble, Tiger Iron, Quartz

edition of 12

158 x 40 x 28 cm

For Angus Taylor, the brief span of human existence, juxtaposed with the timelessness of stone, brings into focus the contrast between transience and permanence, with profound poignancy. Rock and stone form an integral part of the human story, conveying a sense of deep time and deep consciousness.

The stone incorporated into Taylor's works recall the ancient rock found in the earth's crust, contrasting potently with humanity's impermanent and ethereal nature.





NIGEL MULLINS

Painting from Le Confinement #2
watercolour, goache and acrylic on
paper
40 x 30 cm



NIGEL MULLINS

Painting from Le Confinement #4
watercolour, goache and acrylic on
paper
40 x 30 cm



BRETT MURRAY

Boiled Frog

Edition of 6

French red marble

32 x 33 x 27 cm



BRETT MURRAY

Protect

Carrara marble

Edition of 6

40 x 25.3 x 27.6 cm



CARYN SCRIMGEOUR

Entangled

oil on linen

150 x 150 cm

Caryn Scrimgeour's subject matter is chosen from commonplace objects that surround her, they are elevated by exquisite detailing and rendering in oil. Delicate chinaware, glassware and insects are combined with common trinkets and knick-knacks, portrayed against a backdrop of richly patterned fabric in a way that is reminiscent of still life paintings from the Dutch Golden Age.





BEEZY BAILEY

*Love and flowers
for the four horses*

oil on canvas
200 x 150 cm



BEEZY BAILEY

Spring Sprong

oil on canvas
120 x 90 cm





SHANY VAN DEN BERG

He made beautiful vases, an ode I

oil on linen

60 x 40 cm



LEE-ANN HEATH

Under the Bloom

oil on canvas

150 x 80 cm





SHANY VAN DEN BERG

He made beautiful vases, an ode II

oil on linen

60 x 40 cm



PHILIPPE UZAC

Laub 24

oil on canvas

150 x 90 cm

NIC BLADEN

Aloe congolensis

unique piece, bronze on crystal base

76 x 20 x 20.5 cm

Aloe congolensis, (Congo Aloe) is commonly known as 'Tiger tooth aloe'. If nurtured in its infancy and allowed to develop an established root system, this plant will flower with pink or red-orange flowers in late autumn to mid winter.

Rhombophyllum dolabriforme (Elkhorn/ Hatchet plant) a low semi-shrub, richly branching at their tips. Tufted when young the plants slowly grow out into densely branched, low mound up to 30 cm tall at maturity.





NIC BLADEN

Rhombophyllum dalabriforme

unique piece, bronze on crystal base

23 x 19.5 x 20 cm



JEANNE HOFFMAN

Standing Against the Sky

acrylic on canvas

60 x 50 cm



THONTON KABEYA

Rainy Day II

chalk paint, walnut powder
and newspaper ink transfer
on sculpted canvas

78 x 63 cm

RICKY DYALOYI

Untitled (diptych)

mixed media

on canvas

240 x 100 cm

Ricky Dyaloyi's style of painting reflects ordinary citizens going about their daily lives, rendered in heightened colours to reveal the effervescent quality of the community and people with whom he lives.

With an uncanny determination, Dyaloyi aims to unravel the simple mysteries of the human condition through his medium of choice – oil paint.





RICKY DYALOYI

Dream Catcher

mixed media on canvas,

160 x 180 cm



PHILIPPE UZAC

Scratched blue

oil on canvas

150 x 90 cm



BOYTCHIE

2 Skulls in the Dirt

oil, enamel and bitumen on
canvas, stretched over board

80 x 42 cm

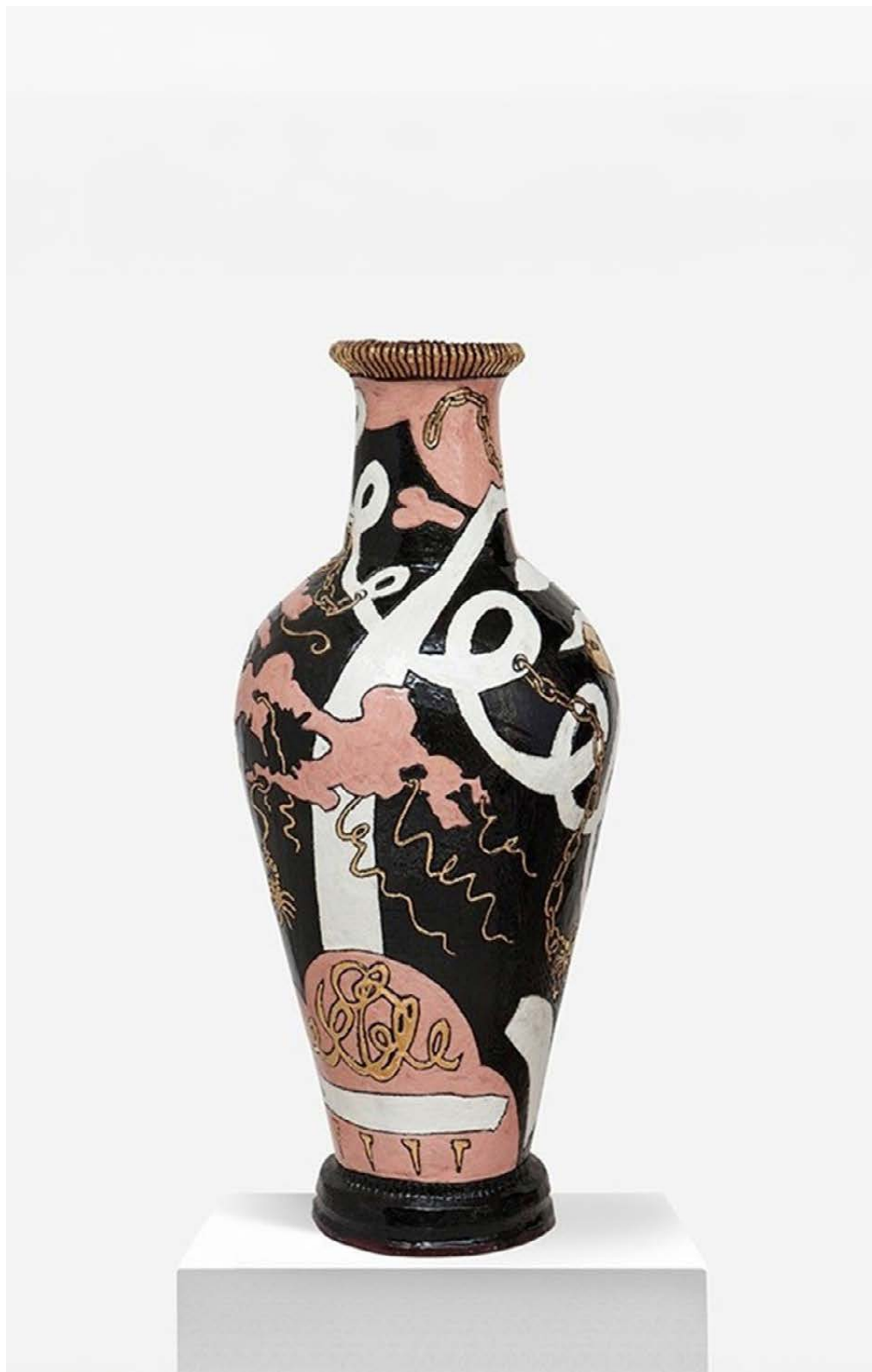


NOMTHUNZI MASHALABA

As she is no more (purple)

mixed media on canvas

150 x 150 cm



LUCINDA MUDGE

Exquisite Masterpiece

ceramic, gold lustre

70 cm



TOP

SHANY VAN DEN BERG

Pink hibiscus in wavy vase

oil on linen

60 x 80 cm

ABOVE

SHANY VAN DEN BERG

We share this space

oil on board

30 x 30 cm



OLIVIA MUSGRAVE

Home from the Pasture

bronze

Edition of 9

40 x 44.5 x 24 cm

Olivia Musgrave draws inspiration from Greek mythology and her sculptures frequently depict mythological themes and characters – Amazons, Fates, Sirens and Graces frequently appear in her work. Musgrave combines this rich classical tradition with wit and a sense of playfulness, creating sculptures that audiences can readily relate to.



OLIVIA MUSGRAVE

Crossing the Night Sky

bronze

Edition of 9

39 x 59 x 15 cm



SHANY VAN DEN BERG

Antheia – Goddess of the Garden

pencil, charcoal and oil on board

130 x 130 cm

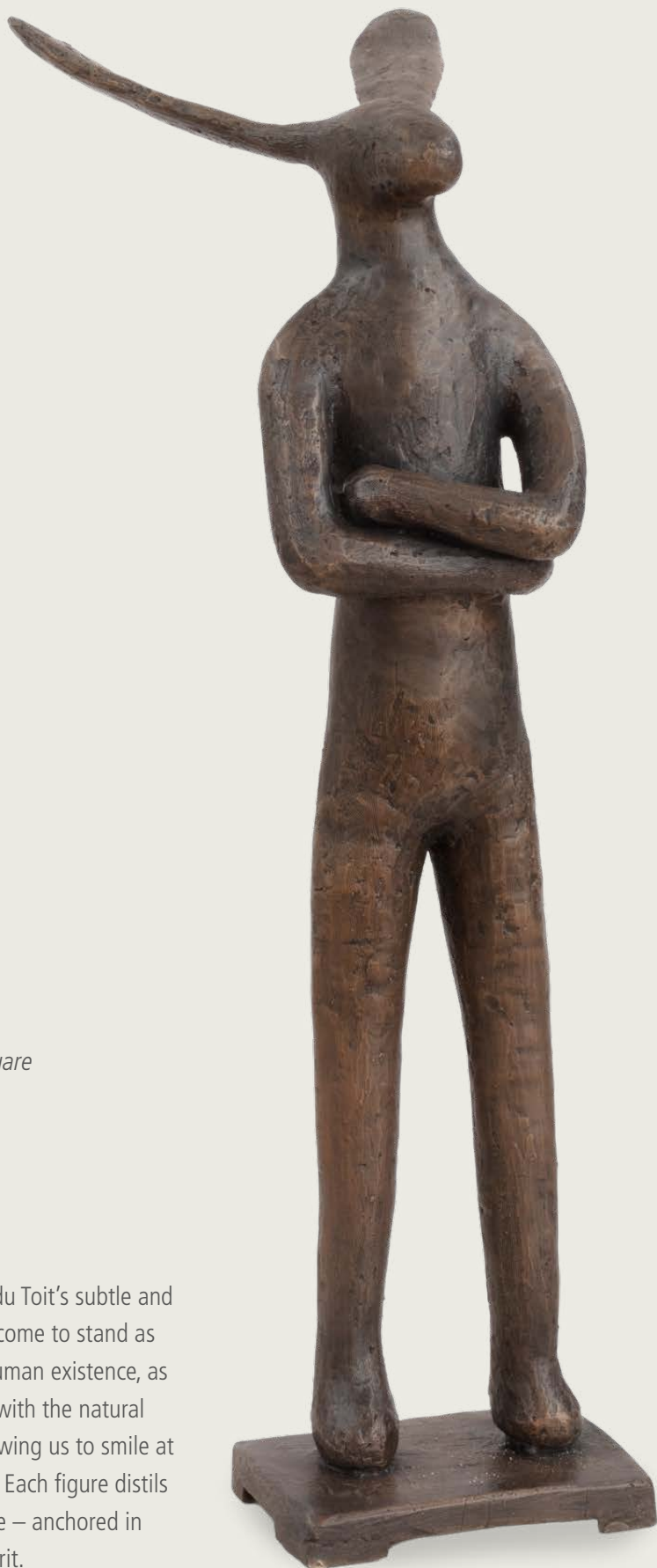
GUY DU TOIT*Arms Folded Legs Square*

bronze

Edition of 16

51.5 x 17 x 25 cm

The hare, under Guy du Toit's subtle and humorous hand, has come to stand as a surrogate for our human existence, as well our relationship with the natural and social world, allowing us to smile at both it and ourselves. Each figure distils a moment of presence – anchored in bronze yet light in spirit.





ABOVE

GUY DU TOIT

Hares (M)

bronze

Edition of 16

25.5 x 20.5 x 9 cm



RIGHT

GUY DU TOIT

Oarsome Hare

bronze

Edition of 16

33 x 11 x 10 cm

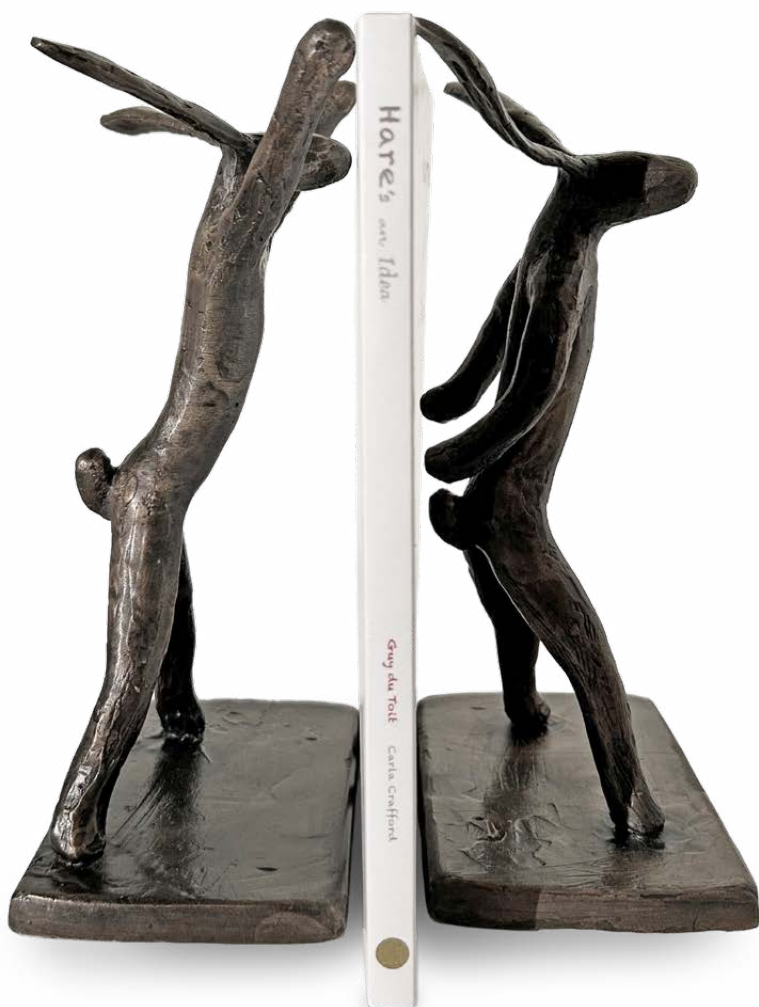


GUY DU TOIT

Flying hare 2 (small)

unique piece, bronze

15 x 23.5 x 11 cm



GUY DU TOIT

Ptolemy 4

bronze

Edition of 50

17 x 13.5 x 24 cm



SHANY VAN DEN BERG

*Between heaven and
earth*

oil on linen
130 x 90 cm



CLAUDE JAMMET

Pysanky II (Red Viburnum)

oil on paper on canvas
22 x 22 cm



TANYA POOLE

Moth Sees in the Moonlight #4

ink on paper

70 x 100 cm



TANYA POOLE

Moth Sees in the Moonlight #3

ink on paper

70 x 100 cm





SANEL AGGENBACH

Natural Selection No. 10

oil on paper

23.5 x 20 cm



NIGEL MULLINS

Wolf

oil on supawood and frame

46 x 56 cm



CLAUDE JAMMET

Chaperon

oil on paper on canvas, 65 x 80 cm



CLAUDE JAMMET

Natron

oil on paper on canvas, 50 x 85 cm



SHANY VAN DEN BERG

A perfect bunch from the Western Cape

oil on linen

150 x 150 cm



Established in 1913 | Modern and contemporary art from South Africa

Everard Read London | 80 Fulham Road | Chelsea, London SW3 6HR
+44 (0)20 7590 9991 | info@everardlondon.com | www.everardlondon.com

Opening hours: Monday to Thursday 10 am – 6 pm
Friday 10 am – 5 pm | Saturdays 12 pm – 4 pm

PHOTOGRAPHY CREDITS

Michael Hall, Matt Slater, Christo Niemandt, Damian Griffiths

ER | 100 YEARS

